

fominaya®

GENERAL CATALOGUE 2026

1939-2024
85
YEARS



COMMITTED TO
GENERATIONAL
RELIEF

LEADERS IN PLUMBING

BUILT-IN CISTERN · FRAMES · PUSH BUTTONS · LOW CISTERNS · INLET VALVES · SERVO INLET VALVES · CABLE FLUSH MECHANISM · SINGLE FLUSH MECHANISM DUAL
FLUSH MECHANISM · OVERFLOW TUBE FLUSH MECHANISM · CISTERN TANKS · PNEUMATIC MECHANISMS · SPECIFIC VALVES AND ACCESSORIES · ANGLE VALVES ·
CONNECTIONS, JOINTS AND SEALS · SCREWS · ACTUATION SPARE PARTS · BOATS · TOILET SEAT COVERS

WWW.FOMINAYA.COM



CERTIFICADO DEL SISTEMA DE GESTIÓN

Número de certificado:
C842152

Fecha Inicial de Certificación:
30 enero 2026

Validez:
30 enero 2026 – 29 enero 2029

Se certifica que el sistema de gestión de
FOMINAYA, S.A.
Ctra. del Pla, s/n, 46117, Bétera, Valencia, Spain

es conforme a la Norma del Sistema de Gestión Medioambiental:
ISO 14001:2015

Este certificado es válido para el siguiente campo de aplicación:

Design, production and commercialization of flushing and filing articles for WC cisterns and concealed systems with double push button and their accessories; design, production and commercialization of accessories for sanitary water installations.

Lugar y fecha:
Barendrecht, 30 enero 2026

Oficina de emisión:
DNV - Business Assurance
Zwolsseweg 1, 2994 LB Barendrecht,
Netherlands



Erie Koek
Representante de la dirección

El incumplimiento de las condiciones establecidas en el Contrato puede dar lugar a la cancelación del certificado.

ENTIDAD ACREDITADA: DNV Business Assurance B.V., Zwolsseweg 1, 2994 LB, Barendrecht, Netherlands - TEL: +31(0)102922689. www.dnv.com/assurance

THIS IS FOMINAYA

fominaya®

SINCE 1939

WHO WE ARE

At Fominaya, we have been the benchmark in the manufacture of tank filling and unloading systems for more than 85 years, with a strong commitment to quality, innovation and technological development. From our plant in Valencia, we manufacture products that stand out for their reliability, efficiency and easy installation.

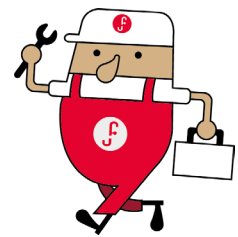
Our trajectory is marked by:

100% spanish manufacture, guaranteeing standards of excellence.

A constant commitment to research and development, creating innovative solutions that anticipate market needs.

A sustainable approach and continuous improvement in every detail of our processes. Fominaya not only creates, manufactures and distributes.

The heart of your bathroom and the plumbers' favourite.



EXCELLENCE
TARGET

INNOVATION &
DEVELOPMENT

ENVIRONMENTAL
RESPONSIBILITY

ES UN PROCEDIMIENTO NEUMATICO FISICAMENTE PURO.

FOMINAYA

LA VALVULA NEUMATICA FISICAMENTE PURO

NO ES ELECTRICO
NO ES MECANICO

Advertising image from more than 50 years ago. It shows the first pneumatic unloader in Spain, invented and developed by Fominaya. To date, it has been used in schools, nurseries, nursing homes and public spaces. see page 60



85 YEAR WARRANTY

One morning, while watching his water tank cracking, Pablo Fominaya Alonso thought about the possibility of manufacturing an flushing mechanism with a light, smooth and total water sealing system. In addition, this sealing system had to have the property that, when the flat sealing rubber was worn out, it could be changed without the need to replace the whole mechanism.

Mr. P. Fominaya, who at that time was selling lanterns and paella dishes, knew little about cistern mechanisms, but in spite of this and with the material he used in the industry, he bought brass,

rubber sheets and made a project for a Flushing Mechanism. Although his enthusiasm was not shared by many of his friends, he continued with great tenacity, studying techniques and systems to turn his idea into reality.

He did not know it at the time, but he was changing the history of sanitation and laying the foundation stone for what we know today as Fominaya.

fominaya



INNOVATION & DEVELOPMENT

Fominaya® has its own R&D Department that designs and develops all its products and patents and its own laboratory that allows it to control and improve the performance of its mechanisms in real discharge cycles.

500 Patents between industrial designs and utility models.

25 Patents registered in recent years.

INNOVATIVE, HIGH QUALITY AND RELIABLE PRODUCT

CE CERTIFICATE EUROPEAN UNION

As a novelty this year, our flushing mechanism have been marked with the CE certificate. The inlet valves have been approved for the UNE-EN 14124 standard.

The CE certificate

Certifies that the Fominaya product is designed and manufactured in accordance with the standards and requirements set by the European Union for safety, health and environmental protection.

Inlet valves for flushing cisterns with internal overflow: **UNE-EN 14124**
WC and urinal flushing cisterns: **UNE-EN 14055**



UNE-EN 14055
UNE-EN 14124

ENVIRONMENTAL RESPONSIBILITY



THE RESPONSIBILITY FOMINAYA BRAND

Saving Water Around the World

One of our main purposes. Water is our most precious resource, which is why we give it the importance it deserves.



We design products that are compatible with these values. We believe in a sustainable future that starts with everyday savings in our bathrooms.

PROCESSES AND MATERIALS MATTERS.

The responsibility of the Fominaya does not end with the manufacture of a good product. We acquire a real commitment with people, our public institutions and the environment in which we live, promoting a more respectful life with the environment and society.

Develop new products and patents that make their use more sustainable (discharge regulators, interruption mechanisms, economisers). Minimise as far as possible the environmental impacts in production, distribution and marketing processes.

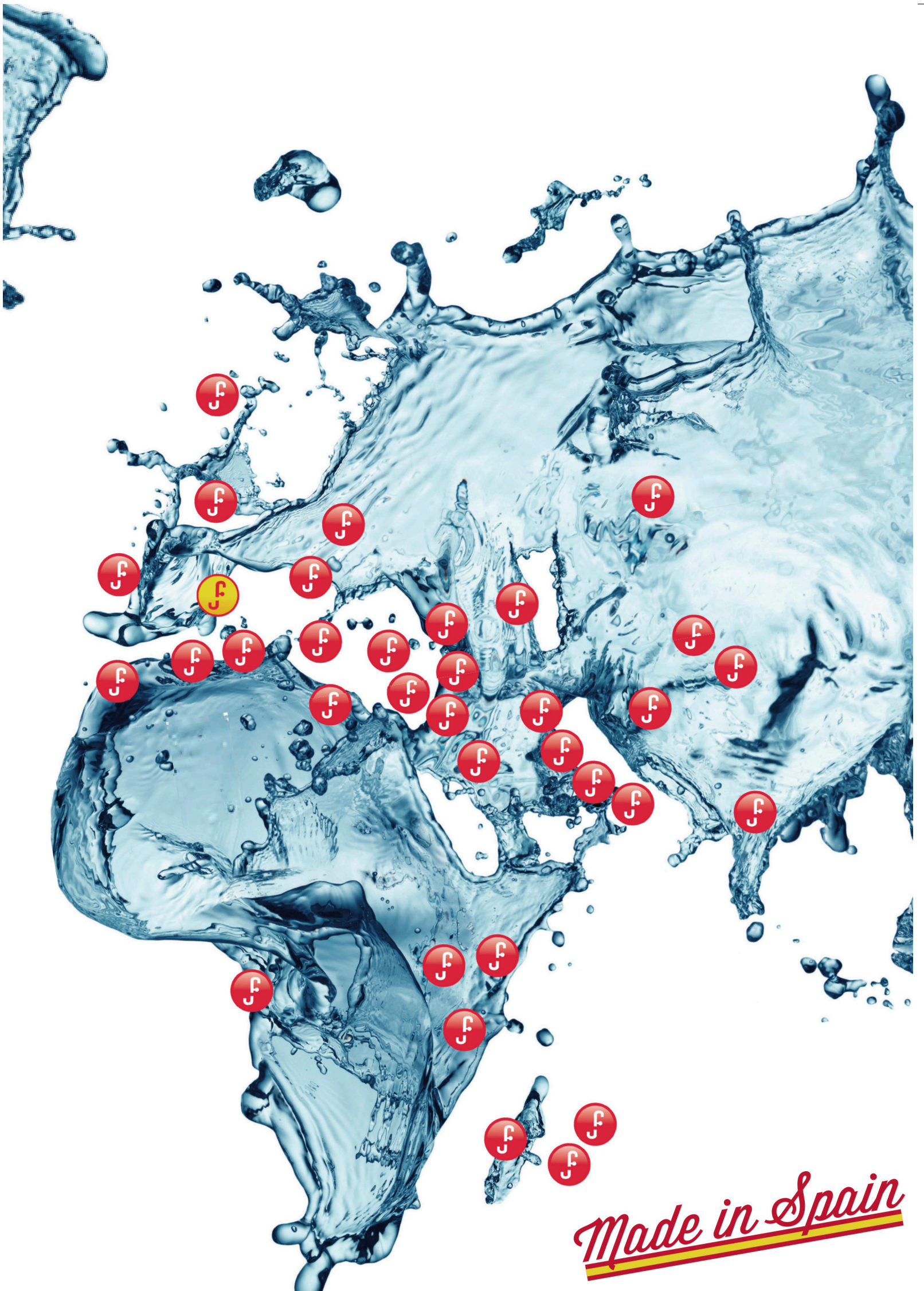




fominaya®

SAVING WATER AROUND THE WORLD

Portugal, France, Morocco, Tunisia, Algeria,
Libya, Syria, Lebanon, Russia, Malta, Albania,
Romania, Cyprus, Czech Republic, Gabon, Réunion,
Mauritius, Madagascar, Tahiti, Jordan, Kuwait, Qatar,
Bahrain, India, Saudi Arabia, United Arab Emirates,
Italy, Belgium, United Kingdom, Kenya, Tanzania,
Uganda, Kazakhstan, Kyrgyzstan, Turmenistan, Polynesia,
Suriname, Sri Lanka, Colombia, Peru, Cuba, Mexico...



Made in Spain



Index

WC SEAT COVERS

ANGLE VALVE

CONCEALED CISTERN

FLUSH PLATES
SPARE PARTS

LOW TANK

INLET VALVES
FLUSH VALVE MECHANISM
SPARE PARTS

HIGH-LEVEL

CISTERN KIT
SPARE PARTS

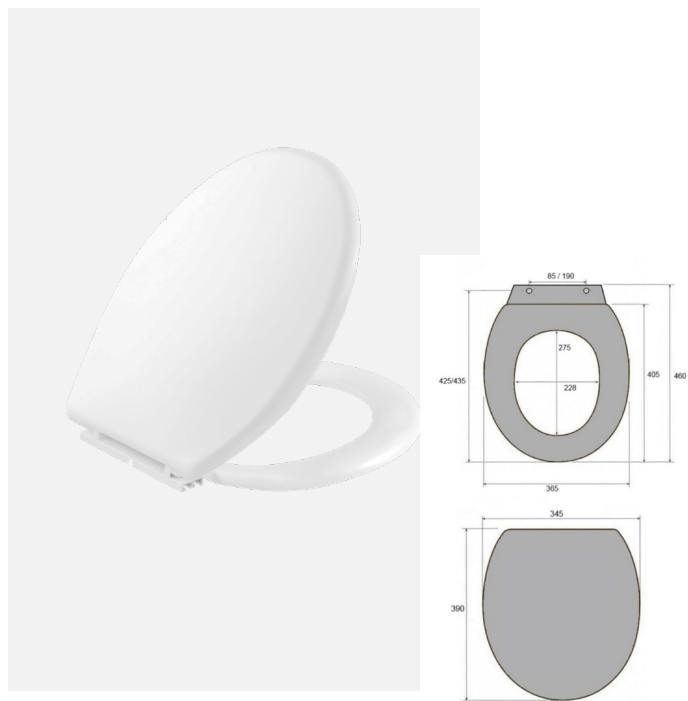
FLUSH VALVE GASK

WC SEAT COVERS



WC Seat Cover Model: Ypanema
Ref: 0178200010

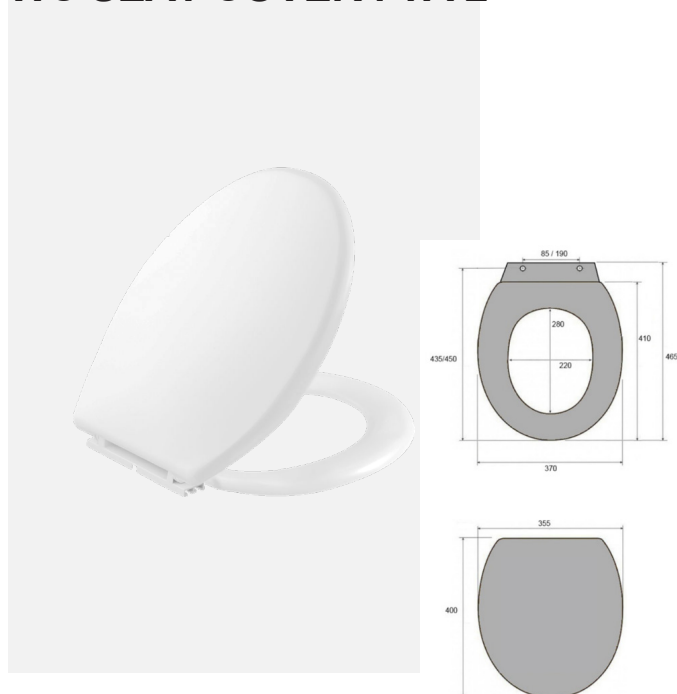
WC SEAT COVER : TA 1



- Made of polypropylene (PP): lightweight, flexible, and economical material
- Smooth surface, wear-resistant, and easy to clean
- Good impact and moisture resistance
- Ergonomic design for comfortable use
- Fixing hinges with screws included
- Compatible with most standard toilets
- Quick installation, no special tools required
- Ideal for domestic use or installations with moderate traffic
- Excellent value for money

MOD.	REF.	Packaging	QTY.
WC TA 1	0153600010	BOX	12

WC SEAT COVER : TA 2



- Made of ABS: a more robust material with a better finish
- More solid, stable surface that is highly resistant to scratches
- Greater resistance to impact and temperature-related deformation
- Ergonomic design with a firmer, premium feel
- Reinforced fixing hinges with screws included
- Compatible with most standard toilets
- Simple and secure installation, with greater structural stability
- Recommended for high-traffic or heavy-use bathrooms
- Highest quality and durability option in the range

MOD.	REF.	Packaging	QTY.
WC TA 2	0153600020	BOX	10



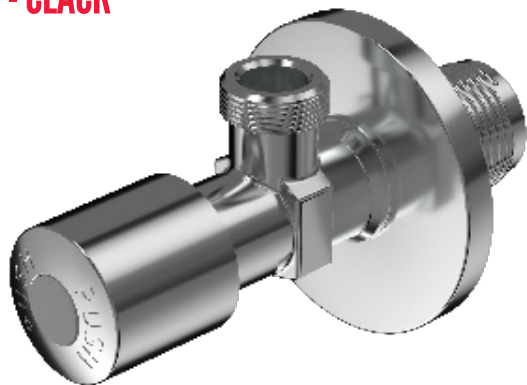
ANGLE VALVE

Angle Valve 1/2" - 3/8" Ref. 0173201010

Angle Valve

1/2" - 3/4" & 1/2" - 3/8"

CLICK - CLACK



CHARACTERISTICS

- Unique and patented click-clack system
- Made of POM and stainless steel specially designed to
- prevent limescale deposits
- Chrome plated finish

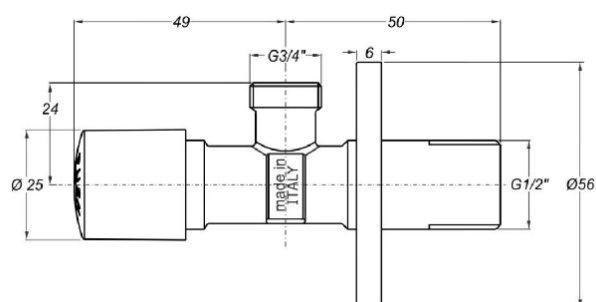
ADAPTABILITY

- Universal for 1/2" inlets
- 3-year manufacturer's warranty except for parts
- subject to wear and tear.
- Replacement and spare parts are guaranteed for a
- 10-year period

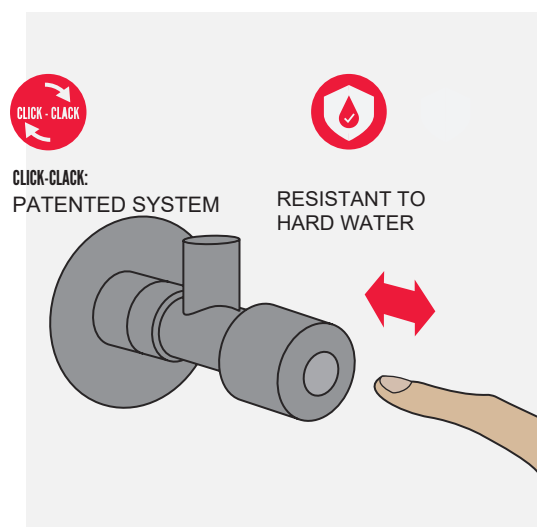
SETTINGS

MOD.	REF.	SIZE	SIZE	PACKAGING	QTY.
ESC-34	0173203010	1/2"	3/4"	BOX	6
ESC-38	0173201010	1/2"	3/8"	BOX	6

TECHNICAL SPECIFICATIONS



USER DIAGRAM

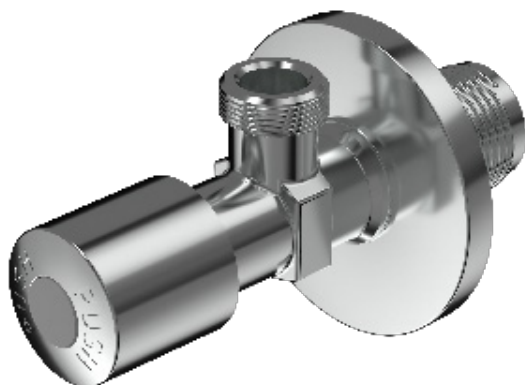


The only angle valve on the market with a click-clack system.

LLAVE DE ESCUADRA 1/2" - 3/8"

EXCLUSIVO
FOMINAYA

CLICK - CLACK



CARACTERÍSTICAS

- 1/2" x 3/8"
- Sistema único y patentado de Click-Clack
- Hechas de POM y acero inoxidable especialmente para evitar depósitos de cal
- Acabado en cromo plateado

ADAPTABILIDAD

- Universal for 1/2" inlets
- 3-year manufacturer's warranty except for parts subject to wear and tear.
- Replacement and spare parts are guaranteed for a 10-year period

CONFIGURACIONES

MOD.	REF.	ENTRADA	CONEXIÓN	ENVASE	UDS.	€/ud.
ESC-38	0173201010	1/2"	3/8"	CAJA	6	14,56

PLANOS TÉCNICOS

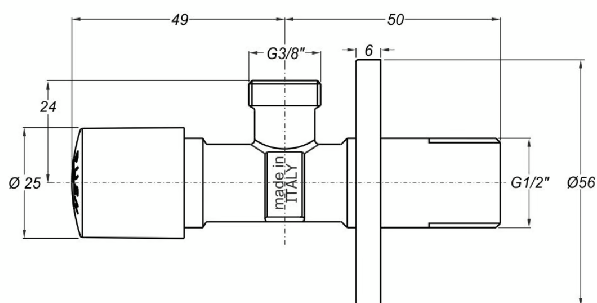
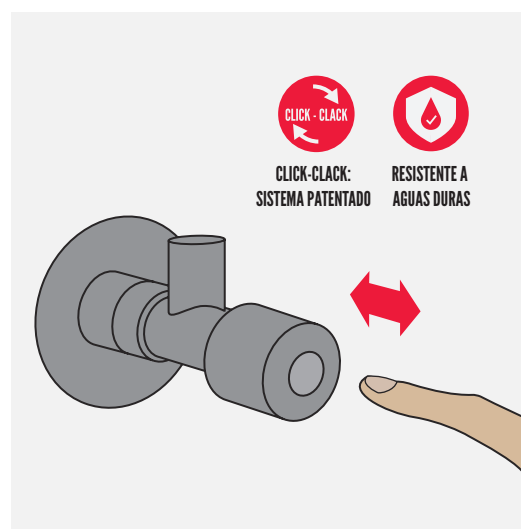


DIAGRAMA DE USO



Las únicas llaves de escuadra del mercado con sistema de accionamiento **click-clack**.

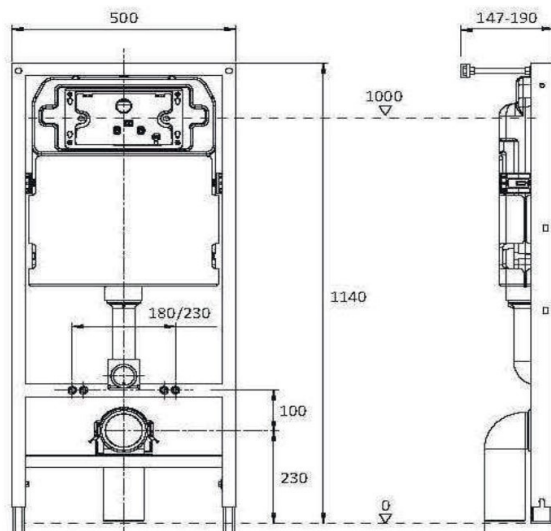
CONCEALED CISTERN



NILO CE



TOILET SUPPORT FRAME 12CM



CERTIFICATION

UNE-EN 14055:2019
Certification WRAS (UK)
Certification WATERMARK (Australia)

CHARACTERISTICS

- Adjustable dual flush mechanism (Total 6/ 9 litres and partial 3/ 4.5 litres).
- Universal frame with **adjustable height** from: minimum **114 to maximum 134 cm**.
- **Brass regulation** valve for connection to 1/2' threaded water supply.
- Fully insulated tank with **anti-condensation polystyrene** cover.
- **Welded metal structure**, polished and finished with grey electrostatic paint.
- Maximum weight resistance **400 kg according to CE** standard.
- **Protective cap** for discharge pipes.
- **Protective cover** for opening and sealing the push button (handling area).
- **Kit for fastening the toilet**. Metric 12 threaded rods for fastening and chrome-plated trim plugs
- **Galvanised foot brackets** adjustable in height from zero to 20 cm.
- **Straight toilet cistern connection** sleeve diameter DN 40 mm.
- Toilet straight connection hose to drainage elbow diameter DN 90 mm.
- **PVC or HDPE outlet elbow**, diameter DN 110 mm.
- **Includes all necessary accessories for protection and fastening.**

ADAPTABILITY

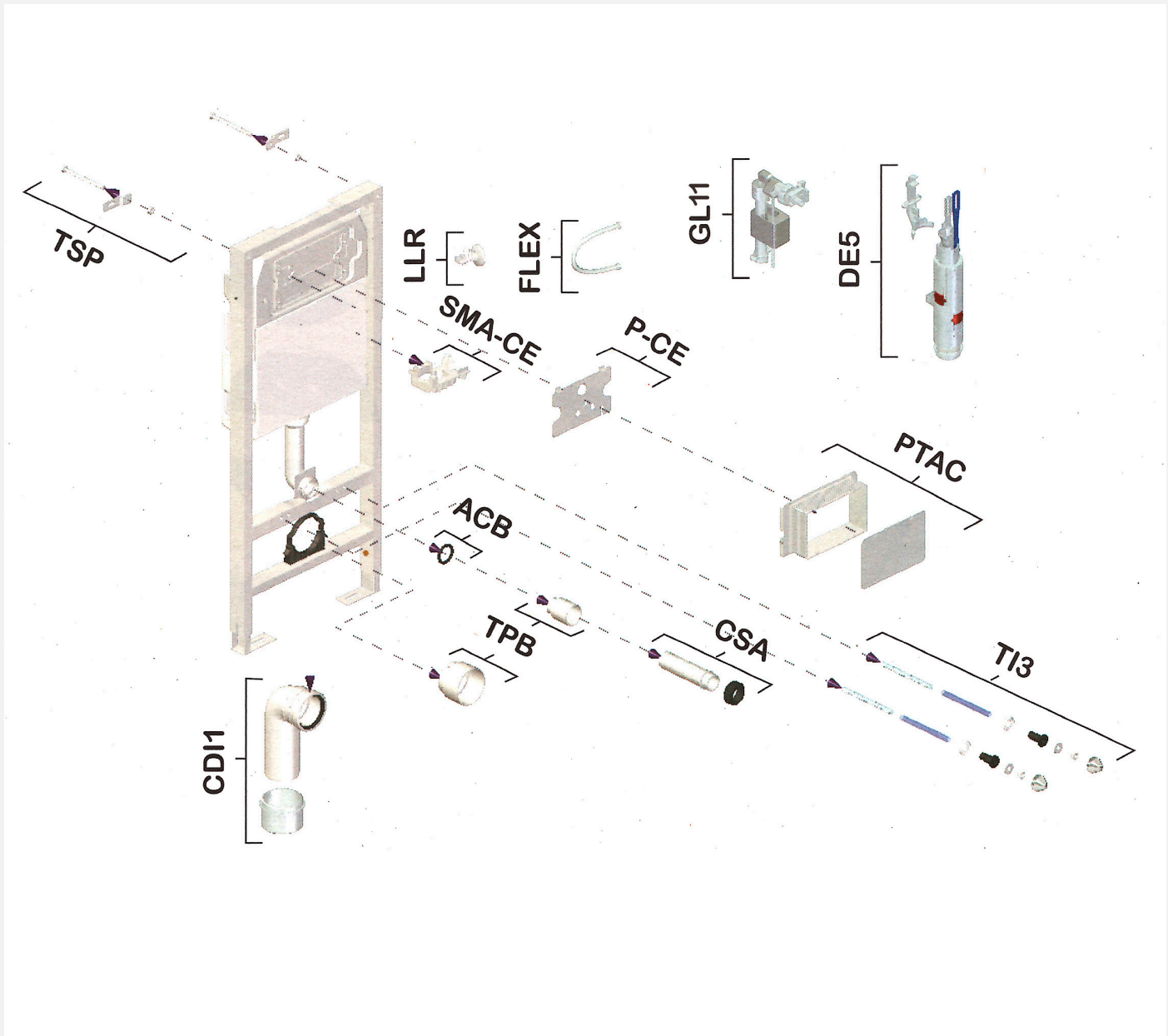
- Suitable for wall-hung toilets with a fixing distance between 180 and 230 mm
- 3-year manufacturer's warranty except for parts subject to wear and tear.
- Replacement and spare parts are guaranteed for a 10-year period

CONFIGURATION

MOD.	REF.	PACKAGING	UNITS.
NILO-CE	0110220001	BOX	1

FASTENERS AND CONNECTIONS INCLUDED

fominaya®



Spare parts and exploded view of the NILO CE frame. Ref: 0110220001

NO SURPRISES.



Fastenings and connections included

The Fominaya built-in cistern models have **all the necessary connections and fastenings** for correct installation. No surprises or second purchases.

SPARE PARTS

See page 23

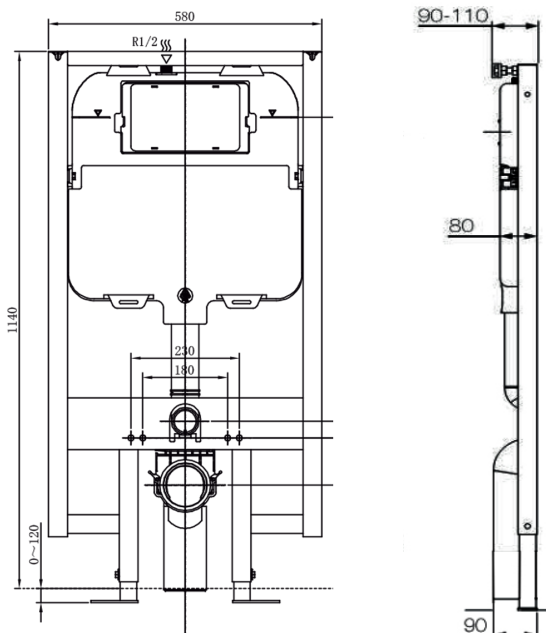
FLUSH PLATES (Not included)

See page 16

ALBA CE



TOILET SUPPORT FRAME 8CM



CERTIFICATION
UNE-EN 14055:2019
Certification WRAS (UK)
Certification WATERMARK (Australia)

CHARACTERISTICS

- Metal frame ideal for the installation of a **suspended toilet** against a solid wall or plasterboard structure.
- Cistern thickness **8 cm**.
- Cistern manufactured in **one piece** with the rotomoulding system (not glued).
- For front **push buttons** in various models and finishes (not included).
- **Adjustable dual flush mechanism** (Total 6 / 9 litres and partial 3 / 4.5 litres).
- Universal frame with **adjustable height** from: minimum 114 to maximum 134 cm.
- **Brass regulation** valve for connection to 1/2' threaded water supply.
- **Fully insulated tank** with anti-condensation polystyrene cover.
- **Welded metal structure**, polished and finished with grey electrostatic paint.
- Maximum weight resistance **400 kg according to CE standard**.
- **Protective cap** for discharge pipes.
- **Protective cover** for opening and sealing the push button (handling area).
- **Kit for fastening the toilet**. Metric 12 threaded rods for fastening and chrome-plated trim plugs.
- **Galvanised foot brackets adjustable** in height from zero to 20 cm.
- Straight toilet cistern connection sleeve diameter **DN 40 mm**.
- Toilet straight connection hose to drainage elbow diameter **DN 90 mm**.
- **PVC or HDPE outlet elbow diameter DN 90 mm**.

ADAPTABILITY

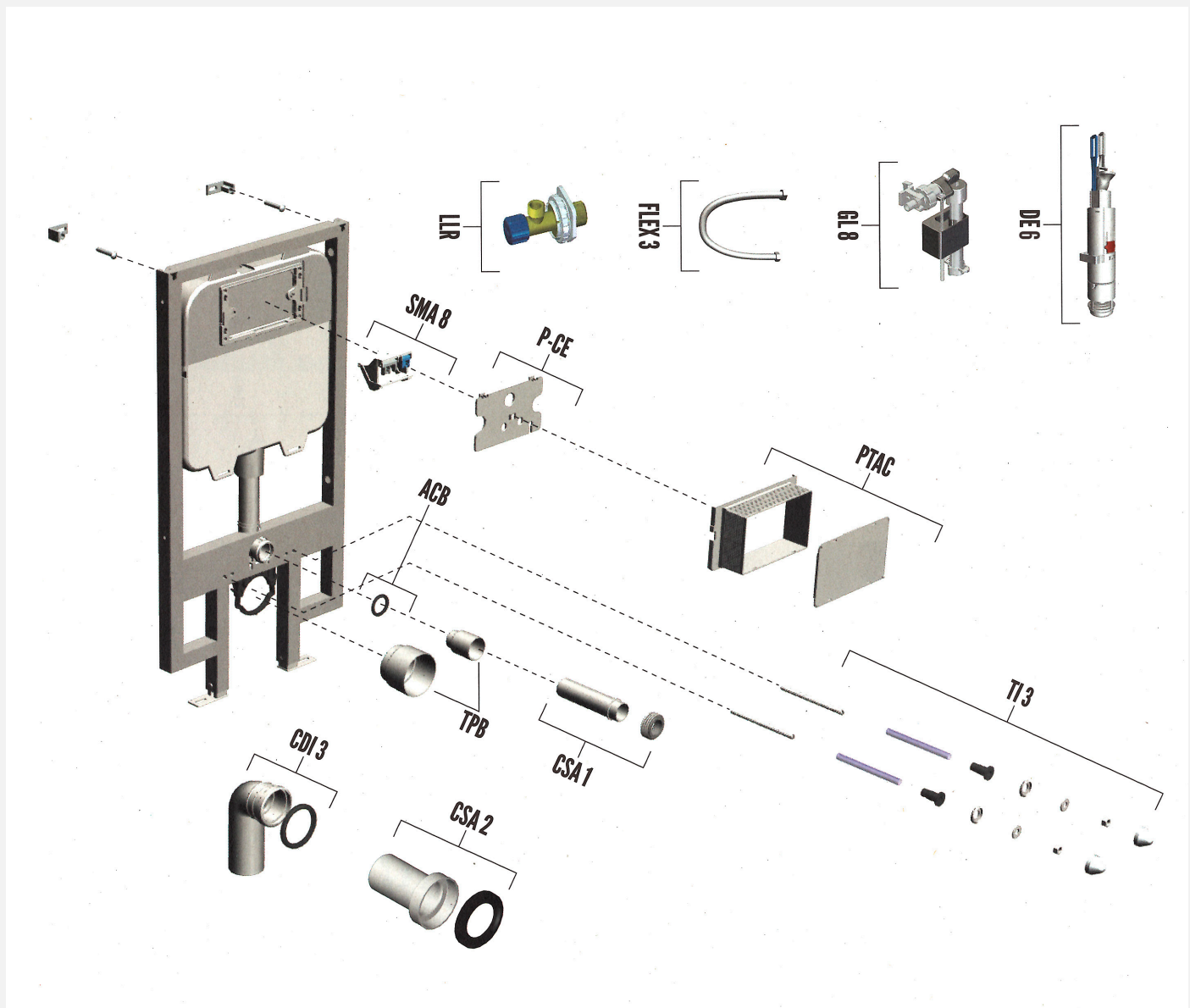
- Suitable for wall-hung toilets with a fixing distance between **180 and 230 mm**
- 3-year manufacturer's warranty except for parts subject to wear and tear.
- Replacement and spare parts are guaranteed for a 10-year period

CONFIGURATION

MOD.	REF.	PACKAGING	UNITS.
ALBA-CE	0110230001	BOX	1

FASTENERS AND CONNECTIONS INCLUDED

fominaya®



Spare parts and exploded view of the NILO CE frame. Ref: 0110220001

NO SURPRISES.



Fastenings and connections included

The Fominaya built-in cistern models have **all the necessary connections and fastenings** for correct installation. No surprises or second purchases.

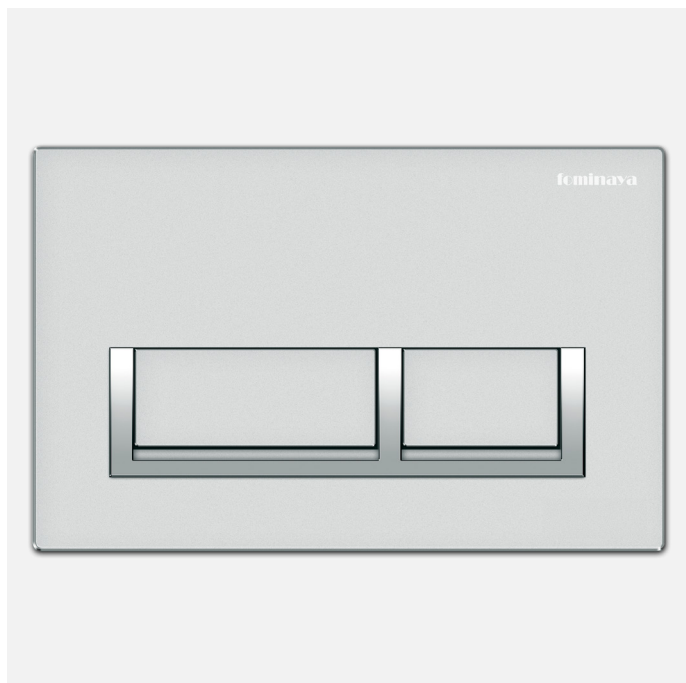
SPARE PARTS

See page 23

FLUSH PLATES (Not included)

See page 16

QÜADRIGA

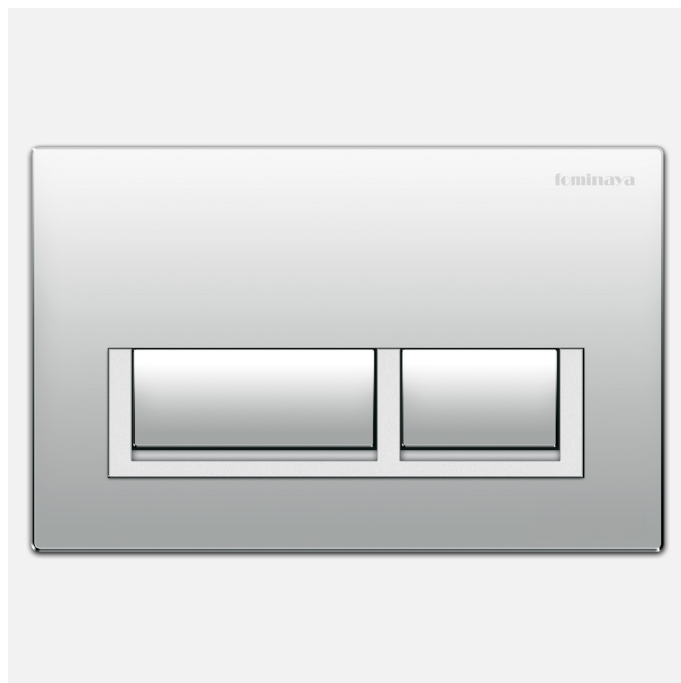


MATTE CHROME PQC-M-CE

ref. 0111110001
boxed

1 pc/box

Mechanical flush plate
Fixing bracket and fasteners included
Quick installation. Includes instructions.

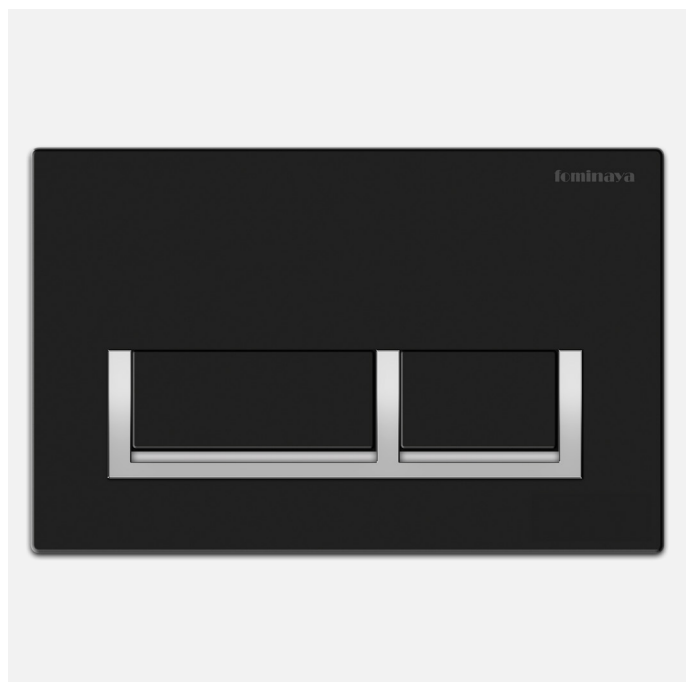


GLOSS CHROME PQC-B-CE

ref. 0111110002
boxed

1 pc/box

Mechanical flush plate
Fixing bracket and fasteners included
Quick installation. Includes instructions.

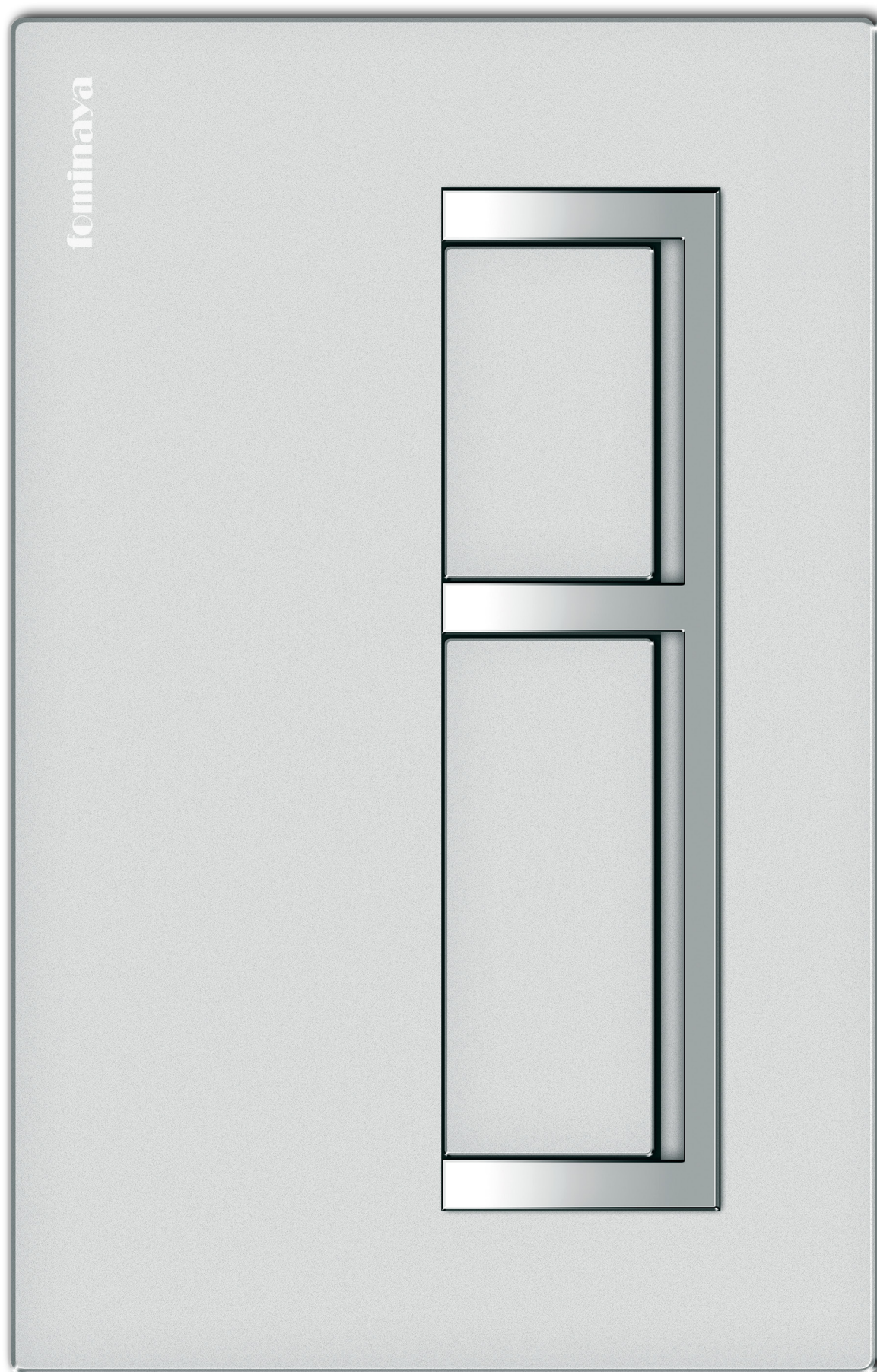


MATTE BLACK PQC-N-CE

ref. 0111110003
boxed

1 pc/box

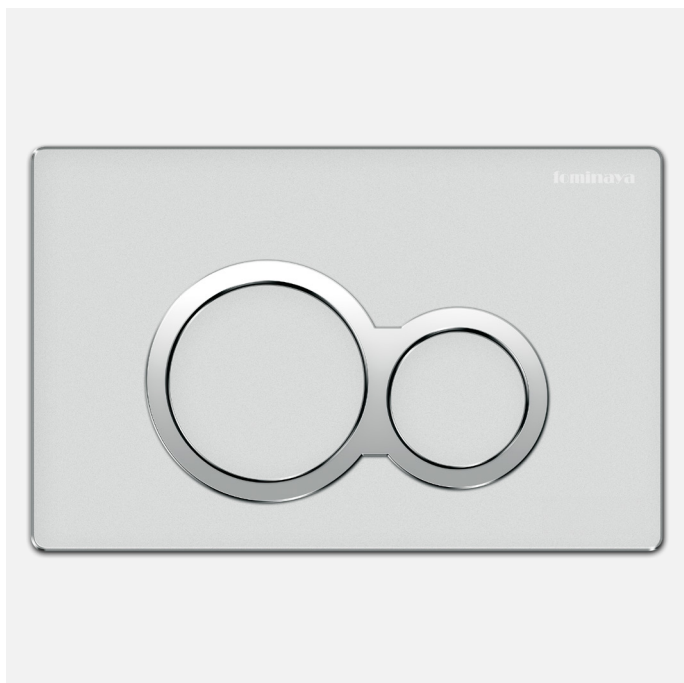
Mechanical flush plate
Fixing bracket and fasteners included
Quick installation. Includes instructions.



236

Actual size
Dimensioned in mm.

COLISEÜM

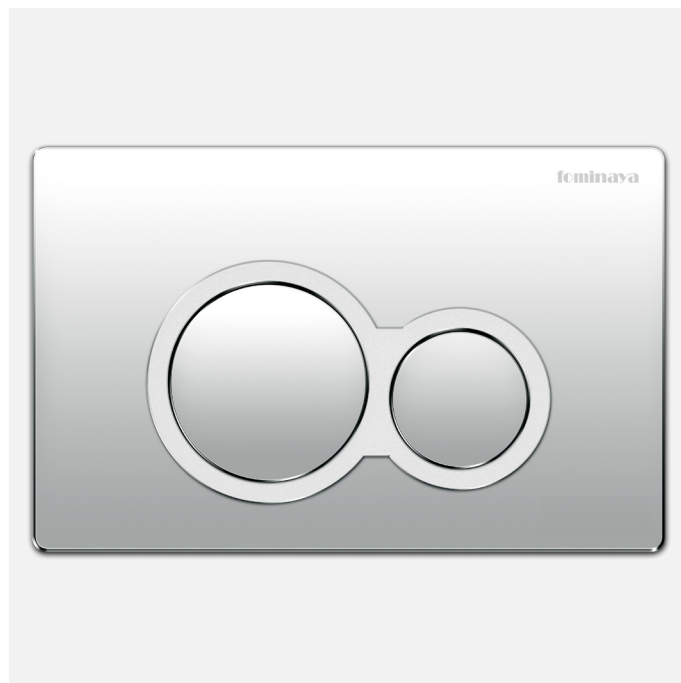


MATTE CHROME PCO-M-CE

ref. 0111130001
boxed

Mechanical flush plate
Fixing bracket and fasteners included
Quick installation. Includes instructions.

1 pc/box



GLOSS CHROME PCO-B-CE

ref. 0111130002
boxed

Mechanical flush plate
Fixing bracket and fasteners included
Quick installation. Includes instructions.

1 pc/box



MATTE BLACK PCO-N-CE

ref. 0111130003
boxed

Mechanical flush plate
Fixing bracket and fasteners included
Quick installation. Includes instructions.

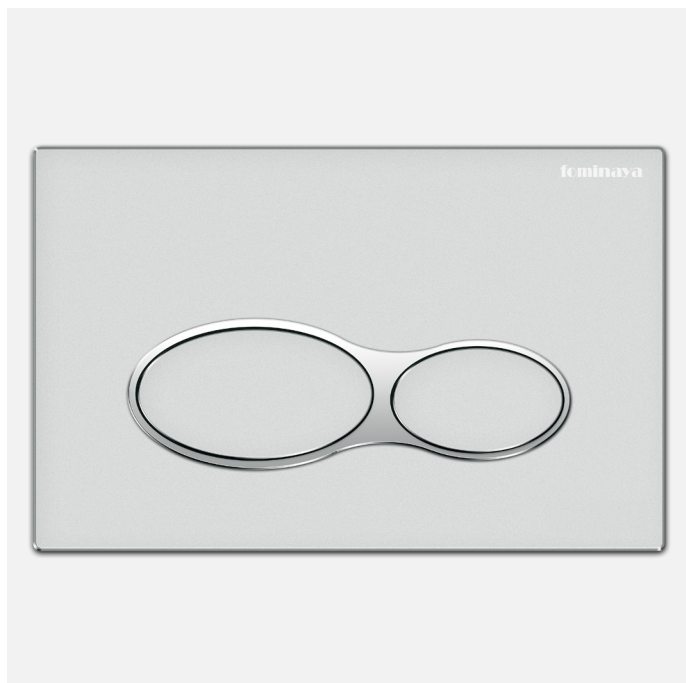
1 pc/box



236

Actual size
Dimensioned in mm.

CIRCÜS

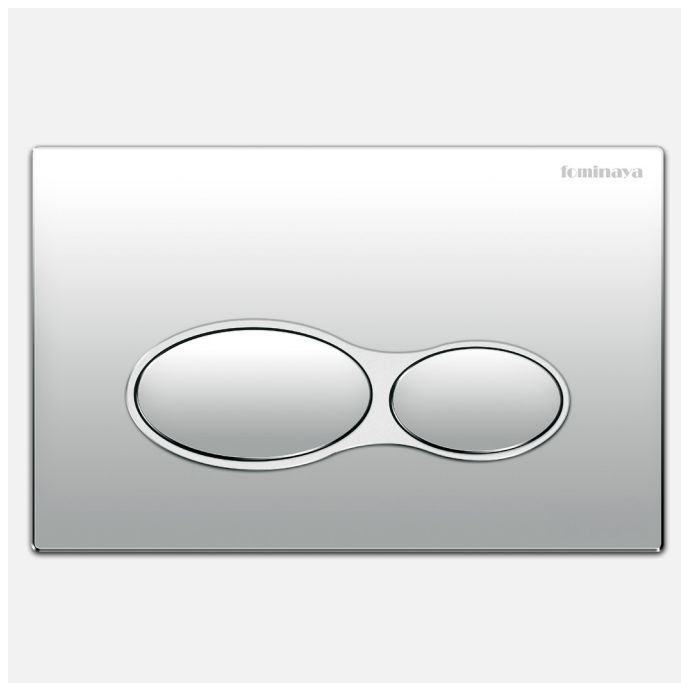


MATTE CHROME PCC-M-CE

ref. 0111120001
boxed

Mechanical flush plate
Fixing bracket and fasteners included
Quick installation. Includes instructions

1 pc/box

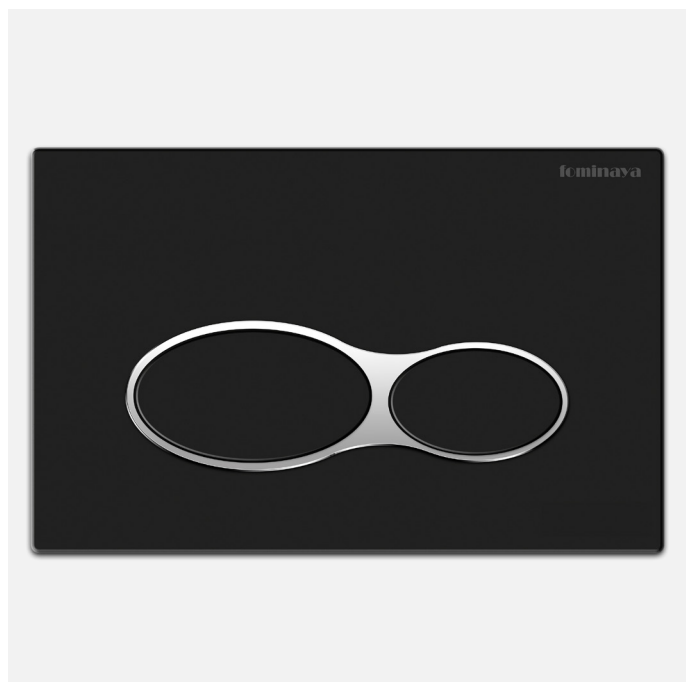


GLOSS CHROME PCC-B-CE

ref. 0111120002
boxed

Mechanical flush plate
Fixing bracket and fasteners included
Quick installation. Includes instructions

1 pc/box



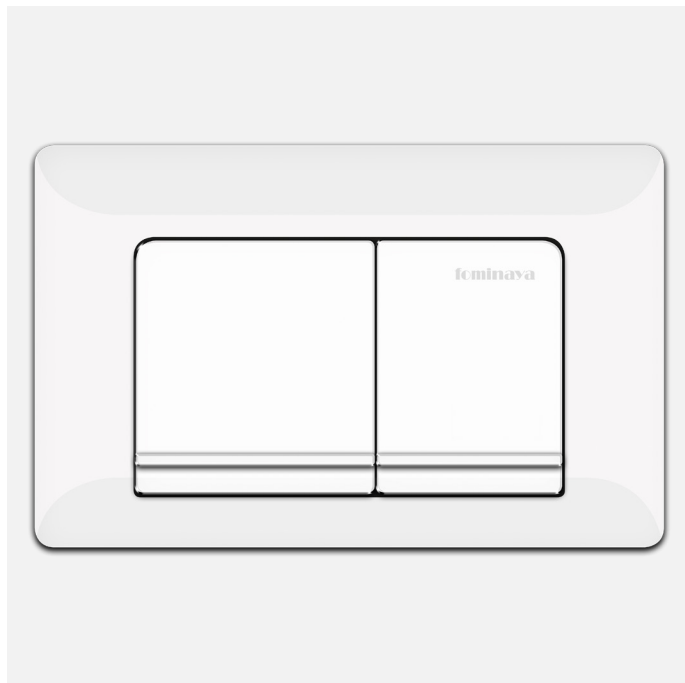
MATTE BLACK PCC-N-CE

ref. 0111120003
boxed

Mechanical flush plate
Fixing bracket and fasteners included
Quick installation. Includes instructions

1 pc/box

DOMÜS



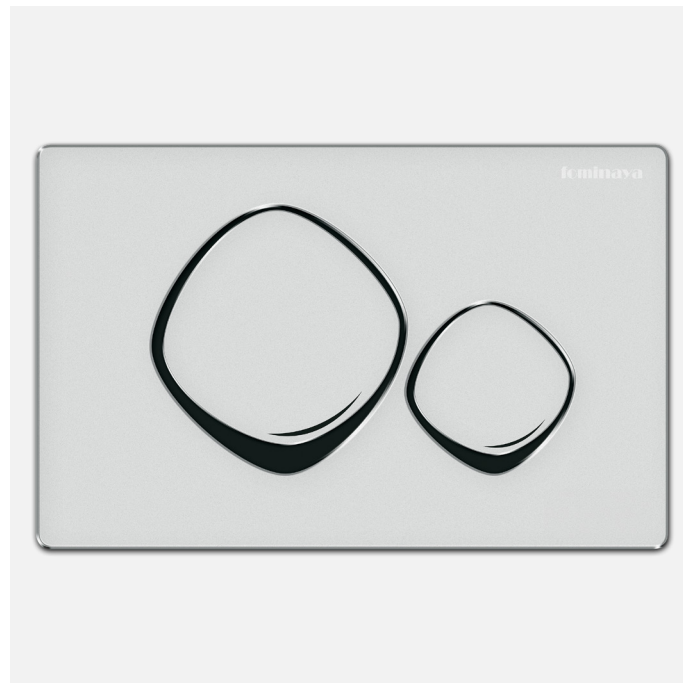
WHITE GLOSS PDM-BL-CE

ref. 0111160004
boxed

Mechanical flush plate
Fixing bracket and fasteners included
Quick installation. Includes instructions

1 pc/box

SPARTACÜS

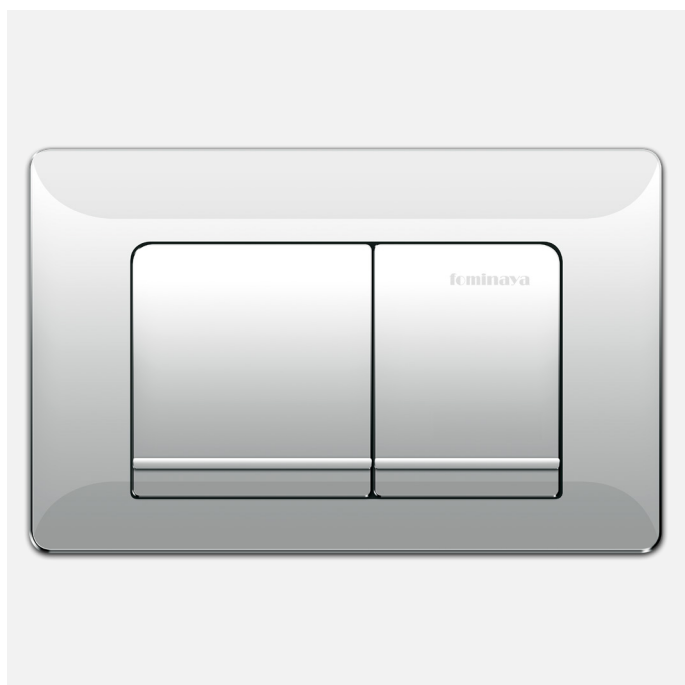


MATTE CHROME PSP-M-CE

ref. 0111150001
boxed

Mechanical flush plate
Fixing bracket and fasteners included
Quick installation. Includes instructions

1 pc/box

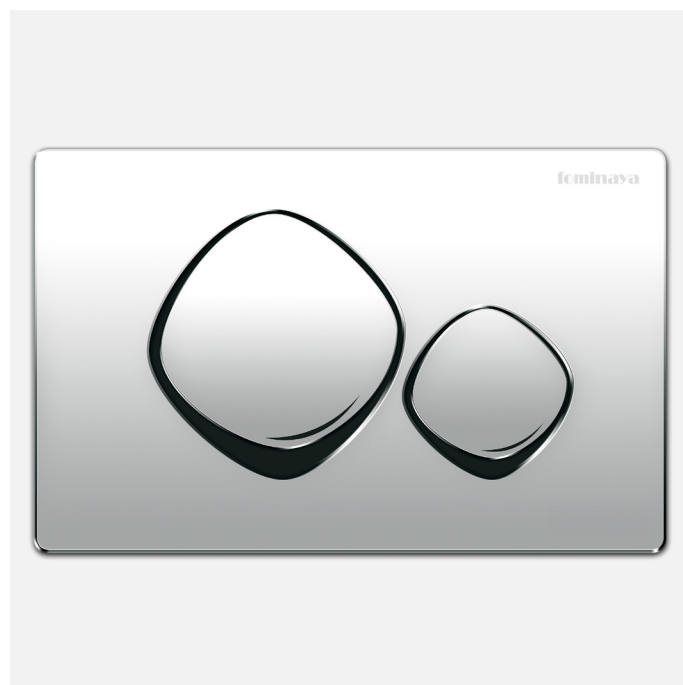


GLOSS CHROME PDM-CB-CE

ref. 0111160002
boxed

Mechanical flush plate
Fixing bracket and fasteners included
Quick installation. Includes instructions

1 pc/box



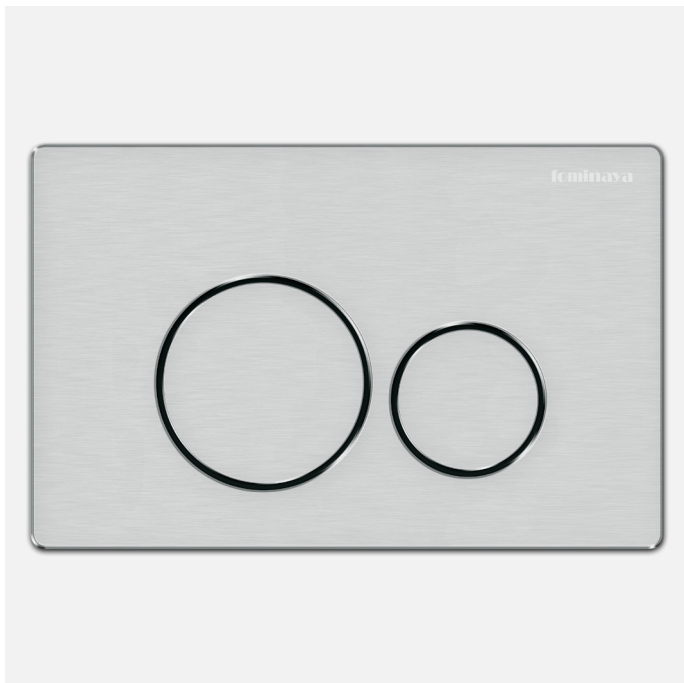
GLOSS CHROME PSP-B-CE

ref. 0111150002
boxed

Mechanical flush plate
Fixing bracket and fasteners included
Quick installation. Includes instructions

1 pc/box

VANDALÜS

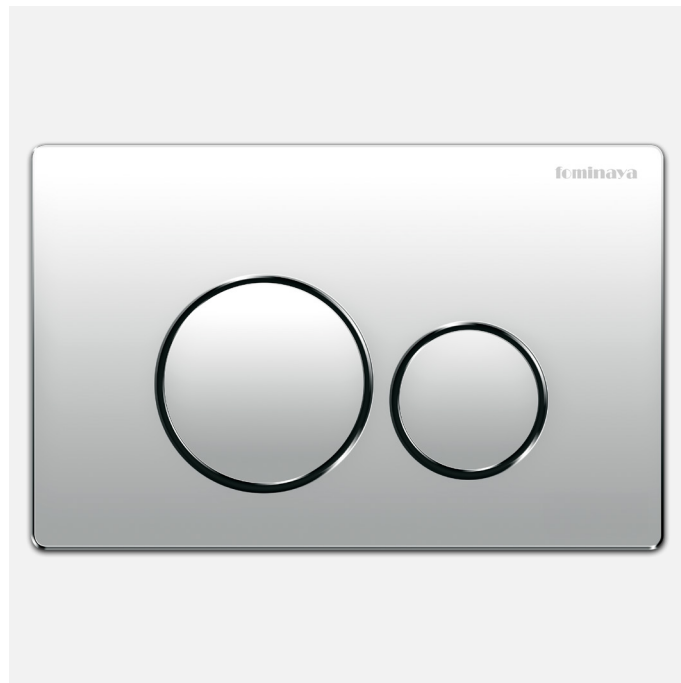


MATTE CHROME PVA-M-CE

ref. 0111140001
boxed

Mechanical push button
Fixing bracket and fasteners included
Quick installation. Including instructions
Stainless steel

1 pc/box



GLOSS CHROME PVA-B-CE

ref. 0111140002
boxed

Mechanical push button
Fixing bracket and fasteners included
Quick installation. Including instructions
Stainless steel

1 pc/box



NEW
INLET VALVE FRANKY 3/8"
HOSE INLCUED

INLET VALVE FRANKY 3/8" (GL10)
Comp. Nilo CE-VolgaCE-Sena

Ref. 0110183120
1 pc/box
Packaging bag



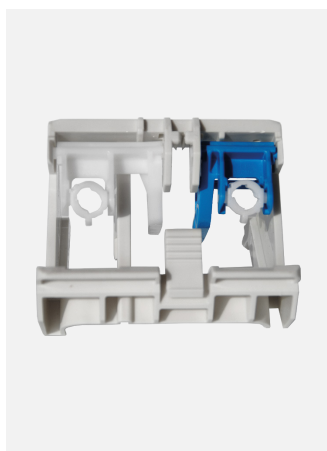
FLUSH MECHANISM DE5
Nilo CE-Volga CE

Ref. 0110702010
1 pc/box
Packaging bag



FLUSH MECHANISM DE6
Alba CE

Ref. 0110703010
1 pc/box
Packaging bag



BRACKET AND DRIVE MECHANISM

Nilo CE (SMA12)
Ref. 0111076029
1 pc/box
Packaging bag



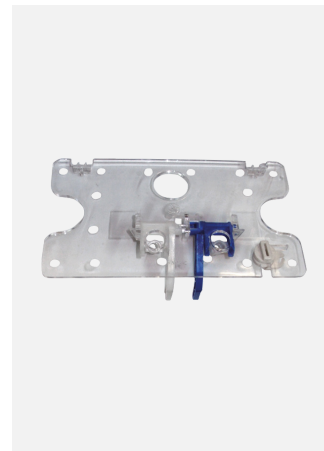
INLET VALVE GL11

Alba CE-Nilo CE-Volga CE-Alba
Ref. 0110180000
1 pc/box
Packaging bag



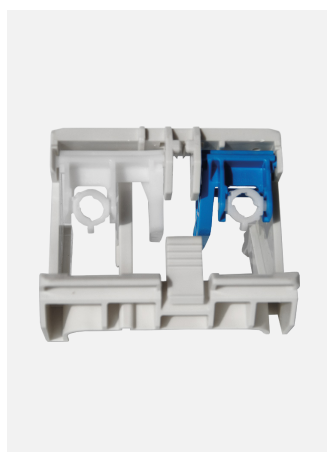
KIT BOX PROTEC. PTAC

All models
Ref. 0111073019
1 pc/box
Packaging bag



KIT COVER PSA

Sena-Nilo-Volga (2015)
Ref. 0111076019
1 pc/box
Packaging bag



BRACKET AND DRIVE MECHANISM

Alba CE (SMA8)
Ref. 0111076059
1 pc/box
Packaging bag



KIT COVER P-CE

Nilo CE-Alba CE
Ref. 0111076039
1 pc/box
Packaging bag



KIT SOPORTE SUJ. GRIFO SPG

Nilo-Volga
Ref. 0111080019
1 pc/box
Packaging bag



T14 BASIN SCREW KIT
All models
Ref. 0111564039
1 pc/box
Packaging bag



ACB WATER CONNECTION PIPE SEAL RING
All models
Ref. 0111012010
1 pc/box
Packaging bag



CL12 BRASS ANGLE 1/2"
Bidet/lav. Nilo
Ref. 0111527019
1 pc/box
Packaging bag



CDB POLYETHYLENE ANGLE
Bidet/lav. Nilo. Salida agua ø32.
Ref. 0111527029
1 pc/box
Packaging bag



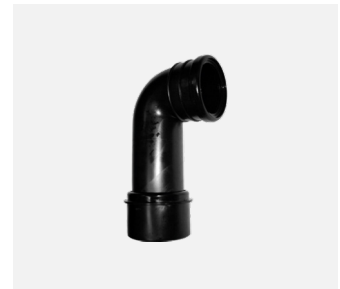
KASC1 PIPE BRACKET FOR W.C
Nilo CE
Ref. 0111080029
1 pc/box
Packaging bag



PROTEC.TAP KIT TPB
All models
Ref. 0111063019
1 pc/box
Packaging bag



DOWNWARD ANGLE CISTERN-TOILETCBA1
Alba CE
Ref. 0111527109
1 pc/box
Packaging bag



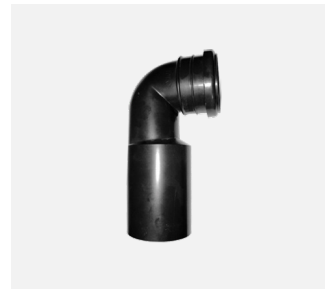
CDI1 90 DEGREE ANGLE WC CONNECTOR
Sena-Nilo-Volga. ø90/110 mm.
Ref. 0111527049
1 pc/box
Packaging bag



CSA1 90 DEGREE ANGLE WC CONNECTOR
All models. ø40 mm.
Ref. 0111527059
1 pc/box
Packaging bag



CSA2 WC CONNECTOR
All models. ø90 mm.
Ref. 0111527079
1 pc/box
Packaging bag



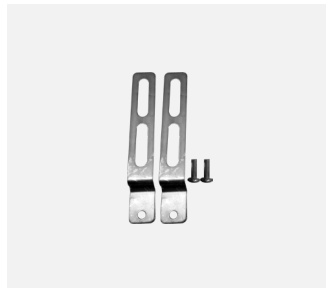
CDI2 90 DEGREE ANGLE WC CONNECTOR
Sena-Nilo-Volga. ø110 mm.
Ref. 0111527069
1 pc/box
Packaging bag



CDI3 90 DEGREE ANGLE WC CONNECTOR
Alba CE. ø90 mm.
Ref. 0111527089
1 pc/box
Packaging bag



TSP1 SCREW FASTENING KIT
Nilo
Ref. 0111564029
1 pc/box
Packaging bag



TSP3 WALL FASTENING KIT
Volga
Ref. 0111564059
1 pc/box
Packaging bag



LLR SQUARE WRENCH
All models. M-M-1/2" x 3/8"
Ref. 0111600019
1 pc/box
Packaging bag



T13 SCREW KIT
Alba CE-Nilo WC./bidet
Ref. 0111564019
1 pc/box
Packaging bag

LOW TANK

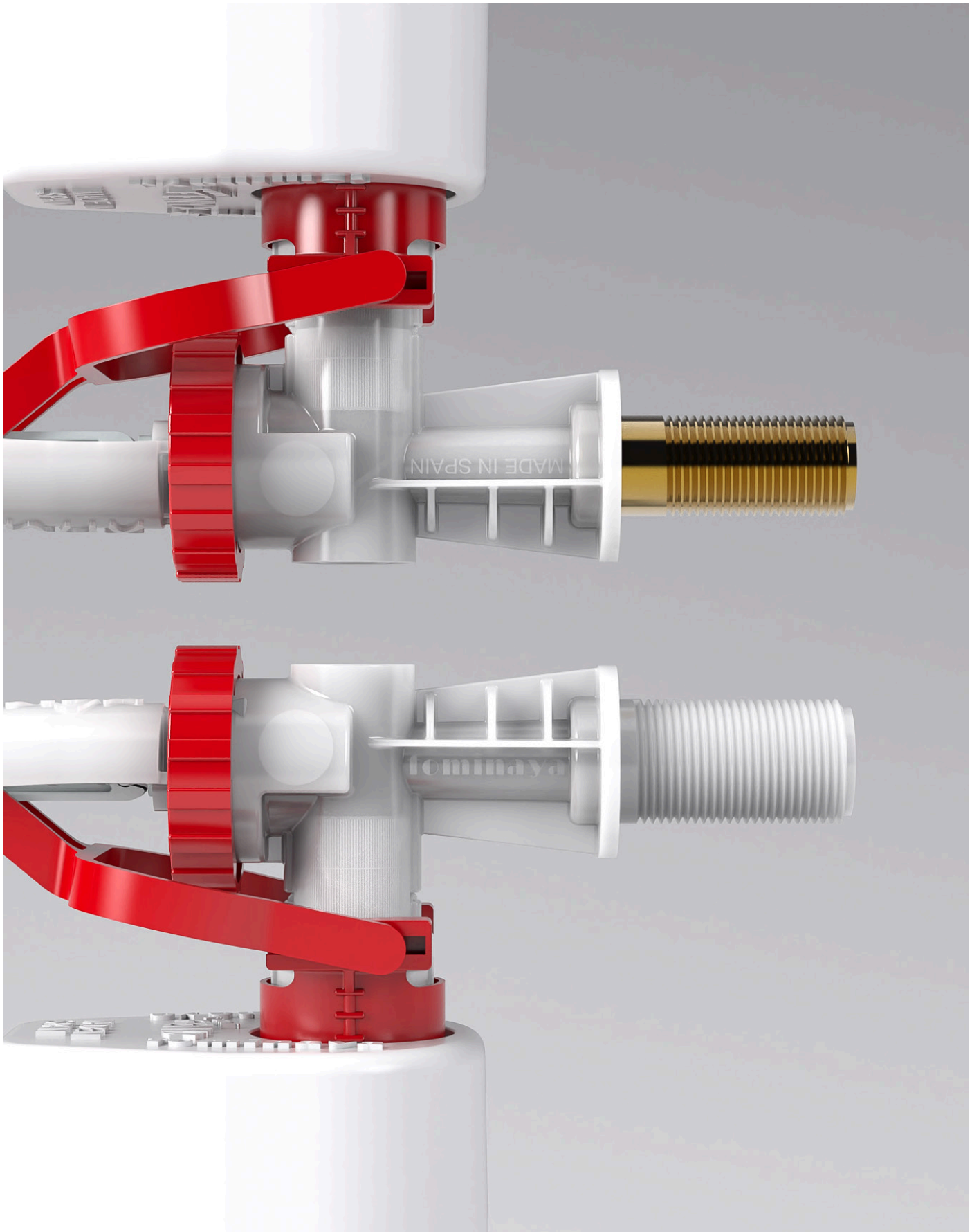


INLET VALVES



FENYX SERIES

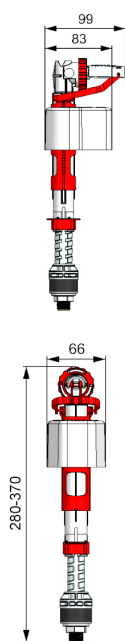
Adapted to the needs of a lifetime, with 85 years of experience in the sector. The original Fominaya series of compact inlet valves, copied all over the world, developed only by us.



Fenyx Side Inlet Valve - brass 3/8" // POM 1/2"

FENYX BOTTOM INLET VALVE

UNE-EN 14124

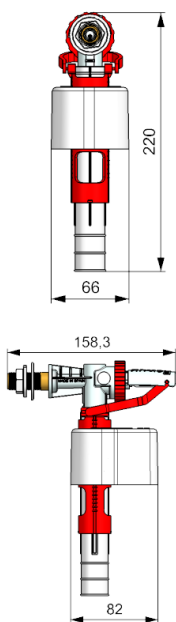


- Water inlet valve for filling of WC cisterns or water tanks with **bottom inlet**
- Body made of **POM**
- Inlet diameter and length depending on model
- Working pressure from **0.01 to 10 bar**
- Water hammer pressure up to **15 bar**
- Withstands water temperatures from 0° to 80°C
- Watertight pressure seal, non-return system
- **EPDM rubber** sealing ring
- **Fast filling, maintenance free & filter free**
- Resistant to **hard and polluted water**

FENYX	REF.	Ø CONEC.	PACKAGING	MAT	QTY.
V38L	0144360320	3/8"	BOX	BRASS	16
V38LB	0144380320	3/8"	BAG	BRASS	25
V38RB	0144381320	3/8"	BAG	POM	25
V12RB	0144382320	1/2"	BAG	POM	25

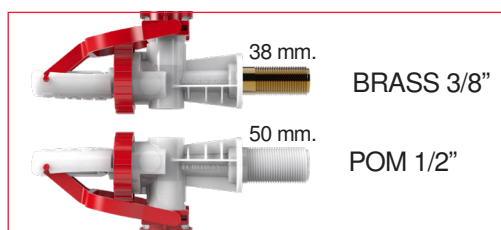
FENYX SIDE INLET VALVE

UNE-EN 14124



- Water inlet valve for filling WC cisterns or water tanks with **side inlets**
- Inlet diameter and length depending on model
- Body made of **POM**
- Working pressure from **0,01 to 10 bar**
- Water hammer pressure **up to 15 bar**
- Withstands water temperatures from 0° to 80°C
- Watertight pressure seal, **non-return system**
- **EPDM rubber** sealing ring
- **Fast filling, maintenance free & Filter-free**
- Resistant to **hard and polluted water**

FENYX	REF.	Ø CONEC.	PACKAGING	MAT.	QTY.
L38L	0144160120	3/8"	BOX	BRASS	16
L38LB	0144180120	3/8"	BAG	BRASS	25
L12RB	0144182120	1/2"	BAG	POM	25



Detail distinction inlet connection

FENYX SERIES

- **100% spanish manufacture.**
- Assemblies supplied with **all parts** for assembly.
- 3-year manufacturing warranty except for parts subject to wear and tear.
- Replacement and spare parts are guaranteed for a 10-year period

FENYX DUAL

SIDE + BOTTOM INLET VALVE

FENYX DUAL

UNE-EN 14124



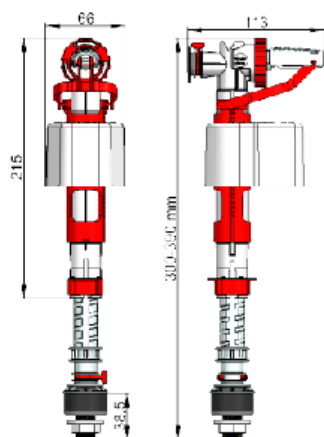
CHARACTERISTICS

- Water inlet valve for cistern filling
- Toilets or water tanks with **side or bottom inlets**
- Body made of POM
- Inlet diameter 3/8" brass x 38 mm length
- **Interchangeable water inlet**
- Working pressure from 0,1 to 10 bar
- Pressure water hammer up to 15 bar
- Withstands water temperatures from 0° to 80°C
- Watertight pressure seal, **non-return system**
- EPDM rubber sealing ring
- **Fast filling, maintenance free**
- **Resistant to hard water and water containing impurities**

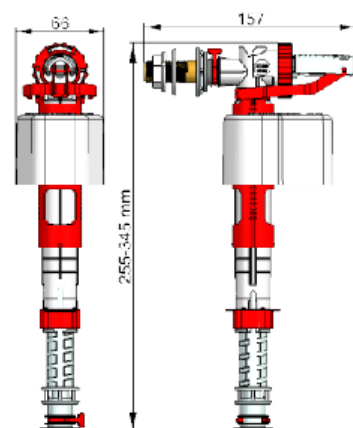
ADAPTABILITY

- **Compatibility with side or bottom entry cisterns**
- **100% national manufacture**
- The set is supplied with **all the parts** for its assembly
- 3-year manufacturing warranty except for parts subject to wear and tear
- Replacement and spare parts are guaranteed for a 10-year period

Bottom inlet configuration



Side inlet configuration



REGULATIONS

According to Standard **UNE-EN 14124:2005**

SETTINGS

MOD.	REF.	Ø CONEC.	PACKAGING	MAT.	QTY.
FENYX	0144405420	3/8"	BOX	BRASS	12
FENYX	0144401420	3/8"	BAG	BRASS	25



A NEW BOX, FOR A NEW CUSTOMER.

With the recent increase in technology and the easy access to installation videos, more and more individuals and 'handymen' are daring to change the cistern mechanisms themselves.

Aware of this, we have redesigned the product boxes to include all the essential information for the self-installation of our mechanisms.

In addition, we have renewed the graphic image of the boxes. A cleaner, simpler look, in line with the image that Fominaya maintains. Boxes that stand out more and that help the customer for an easy installation.

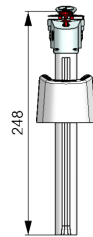
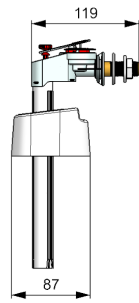


SERVO SERIES

The Fominaya Servo series. The best choice for clean water. So quiet that you won't even know you have it on. Without tools and with a filter for impurities.

NEMO

UNE-EN 14124

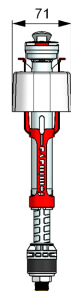
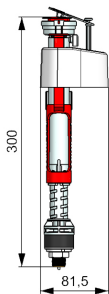


- Water inlet valve for filling WC cisterns or water tanks with **side inlet**.
- Body made of POM.
- Inlet diameter according to model
- Working pressure from 0,2 to 10 bar
- Water hammer pressure up to 15 bar
- Withstands water temperatures from 0° to 80°C
- **Silent servo closing**
- **Fast filling**
- **Filter for impurities**

NEMO	REF.	Ø CONEC.	PACKAGING	MAT.	QTY.
38L	0144191110	3/8"	CAJA	LATÓN	16

TYTAN

UNE-EN 14124



- Water inlet valve for filling of WC cisterns or water tanks with **bottom inlet**
- Body made of POM
- Inlet diameter depending on model
- Working pressure from 0,2 to 10 bar
- Water hammer pressure up to 15 bar
- Withstands water temperatures from 0° to 80°C
- **Silent servo shut-off**
- **Fast filling**
- **Filter for impurities**

TYTAN	REF.	Ø CONEC.	PACKAGING	MAT.	QTY.
38L	0144391310	3/8"	BOX	BRASS	16

REGULATION

According to Standard UNE-EN 14124:2005

SERVO MODELS

- **100% spanish manufacture**
- Assemblies supplied with all parts for assembly.
- 3-year manufacturing warranty except for parts subject to wear and tear
- Replacement and spare parts are guaranteed for a 10-year period

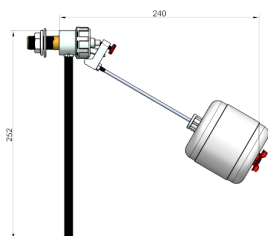
INLET VALVES WITH PLASTIC FLOATER



The ones that have been **around forever**. The original recipe for inlet valve, improved with high quality polymers and the classic Fominaya stamped and machined brass tail. A simple but tremendously effective inlet valve

SIDE INLET VALVE GL1 MODEL

UNE-EN 14124

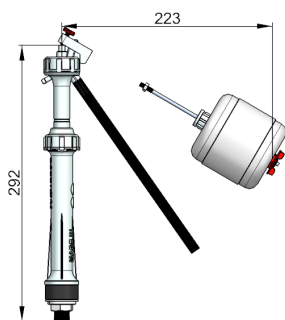


- Water inlet valve for filling of WC cisterns or water tanks with **side inlet**
- Body made of acetal resin (POM)
- Filling regulation screw (red POM)
- 240 mm rod made of nickel steel
- Adjustable floater made of expanded PS
- Working pressure: 0,01 to 10 bar
- Water hammer pressure: 15 bar
- Water temperature: 0 to 80° C
- **Pressure-tight seal, hard water resistant**
- **Quick filling, maintenance free**
- **252 mm. high y 240 mm. de long**

MOD.	REF.	Ø CONEC.	PACKAGING	MAT.	QTY.
GL1	0144100110	3/8"	BAG	BRASS	50
GL5	0144100120	3/8"	BAG	POM	50
GL6	0144101120	1/2"	BAG	POM	50

BOTTOM INLET VALVE GT1 MODEL

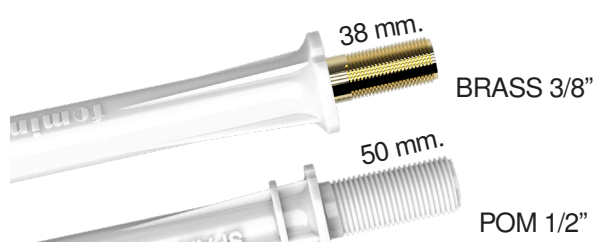
UNE-EN 14124



- Water inlet valve for filling of WC cisterns or water tanks with **bottom inlet**
- Body made of acetal resin (POM)
- Filling regulation screw (red POM)
- 240 mm rod made of nickel steel
- Adjustable floater made of expanded PS
- Working pressure: 0,01 to 10 bar
- Water hammer pressure: 15 bar
- Water temperature: 0 to 80° C
- **Pressure-tight seal, hard water resistant**
- **Quick filling, maintenance free**
- **292 mm. high and 223 mm. long**

MOD.	REF.	Ø CONEC.	PACKAGING	MAT.	QTY.
GT1	0144300310	3/8"	BAG	BRASS	20
GT4	0144300320	3/8"	BAG	POM	20
GT2	0144304310	1/2"	BAG	POM	20

Detail distinction inlet connection



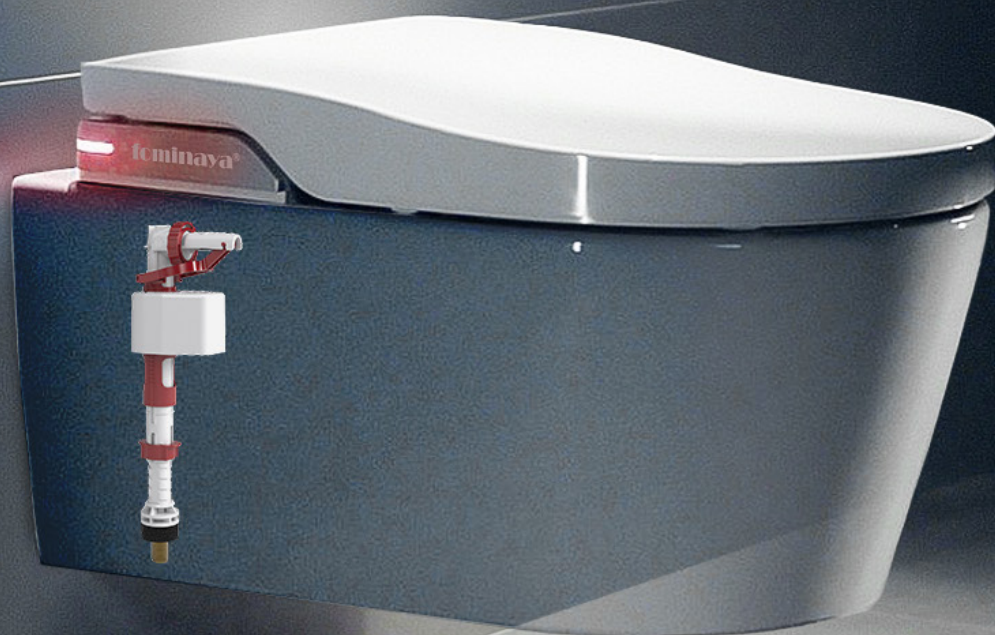
INLET VALVES WITH FLOATERS

100% national manufacture.

Assemblies supplied with all parts for assembly. 3-year manufacturing guarantee except for parts subject to wear and tear.

Replacement and spare parts are guaranteed for a 10-year period

REPLACEMENT FOR SMART TOILETS



FLUSH MECHANISM



Tyfon 3G 14 + Fenyx Side Inlet Valve. Ref: 0129552231

DRACKO



Universal dual flush cable mechanism

One of Fominaya's most iconic flush mechanism. Renowned for its innovative cable system that allows for smoother and more precise control, making it an affordable and easy to install and use option. Extra soft push button, perfect for elderly and kids.



CHARACTERISTICS

- Double flushing mechanism **with cable** for low cistern.
- Total flush volume of 9 L and **partial flush adjustable between 3 and 4.5 L.**
- Variable height and position of the push button thanks to the cable.
- Push button diameter from 16 to 45 mm.
- Quick and **easy installation without cutting parts.**
- Made of **high quality** polymers.
- Black EPDM rubber sealing.
- **Resistant to the hardest water and impurities.**

ADAPTABILITY

- **Universal compatibility** with top and side push-button cisterns.
- **Installation on Fominaya and Roca* bases.**
- Installation system by means of screw/coupling.
- 3-year manufacturing warranty except for parts subject to wear and tear.
- Replacement and spare parts are guaranteed for a 10-year period

REGULATION

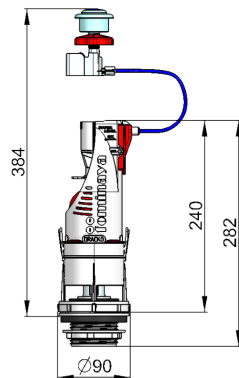
According to Standard **UNE-EN 14055:2019**

SPARE PARTS

See page 49



COMPATIBLE WITH MAIN MARKET BASES



SIMPLE SETTINGS

MOD.	REF.	BUTTON	BASE & JOINTS	SCREWS	PACKAGING	QTY.
DRK 10	0139301011	YES	YES	/	BAG	20
DRK 12	0139309011	YES	YES	YES	BAG	20
DRK 12	0139307011	YES	YES	YES	BOX	20

THE RE-EMERGE OF A 'NEW' DRACKO.

The Dracko is one of the pioneering cable mechanisms in the world. A fire in our factory in Bétera (Valencia) damaged the moulds from which it was made, leaving us without it for more than two years.

During that time, we redesigned the moulds and remoulded them.

This new version is what we call Dracko V2. An even more improved flush mechanism than the previous one and with a great novelty: **compatibility 95%** of the bases on the market. This, together with its ease of installation and use, makes it one of the best options for equipping the toilet cistern.

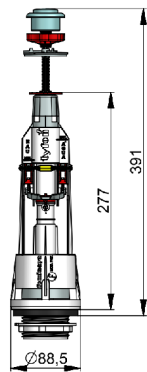


TYFON +

UNE-EN 14055

A simplified version of the Tyfon 3G. Functionally the same but only compatible with Fominaya and black Roca bases*. Ideal for the price if we have to dismantle the cistern.

SINGLE INTERRUPTIBLE FLUSH MECHANISM



CHARACTERISTICS

- **Interruptible** flushing mechanism for WC cisterns equipped with top push button
- **Chrome-plated push button** included in all models
- **Easy assembly** without cutting parts
- Easy **bayonet system** for attaching and detaching the base
- **Easy adjustment** due to locking system (green/yellow part to be removed after installation)
- Made of **high quality polymers**
- Seals made of **cellular rubber** (sponge)

ADAPTABILITY

- Installation on **Fominaya bases, black Roca base*** thanks to the coupling and new installation on models supplied with base.
- Universal push button adaptable to all covers with holes from 16 to 45 mm diameter.
- 3-year manufacturing warranty except for parts subject to wear and tear.
- Replacement and spare parts are guaranteed for a 10-year period

REGULATION

According to standard **UNE-EN 14055:2019**

SPARE PARTS

See page 49

SIMPLE CONFIGURATION

MOD.	REF.	BUTTON	COUPLING FOR ROCA*	BASE & JOINTS	SCREWS	PACKAGING	QTY.
TYF4	0129102031	YES	YES	/	/	BAG	25
TYF5	0129101031	YES	/	YES	/	BAG	25
TYF10	0129106031	YES	YES	YES	/	BAG	25
TYF12	0129317011	YES	YES	YES	YES	BOX	20

COMPLETE FLUSH MECHANISM (WITH INLET VALVE)

The mechanisms 0129101231 and 0129701231 include a chrome-plated side trim..

MOD.	REF.	FLUSH MECHANISM	INLET VALVE	PACKAGING	QTY.
TYF1	0129101131	TYF12	BOTTOM INLET VALVE GT	BOLSA	20
TYF3	0129101231	TYF12	SIDE INLET VALVE GL	BOLSA	20
TYF14	0129701231	TYF12	FENYX SIDE INLET VALVE	BOLSA	15
TYF15	0129701131	TYF12	FENYX BOTTOM INLET VALVE	BOLSA	15

TYFON 3G



SINGLE INTERRUPTIBLE FLUSH MECHANISM

Tyfon 3G. Our flagship product. Perfect design for all types of cisterns (top push button), ultra-fast and tool-free installation. For professionals looking for quality and efficiency in every installation.



CHARACTERISTICS

- Installation on **Fominaya, Roca*** bases **without removing the cistern** (white and grey thanks to the design of the cartridge-type mechanism and black with coupling) and new installation on models equipped with a base.
- **Universal push button** adaptable to all top-operated lids with bores from 16 to 45 mm in diameter
- **Easy adjustment with automatic system**
- Seals in black **EPDM rubber**
- Seals for cist./inod. connection in **cellular rubber** (sponge)

ADAPTABILITY

- Compatibility with **cisterns with side or bottom water inlet** and top push button or bottom and top push button.
- **100% national manufacture**
- The set is supplied with all the parts for assembly.
- 3-year manufacturing guarantee, except for parts subject to wear and tear.
- Replacement and spare parts are guaranteed for a 10-year period

REGULATION

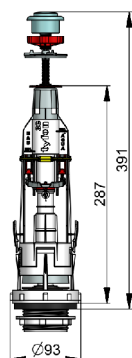
According to standard **UNE-EN 14055:2019**

RECAMBIOS

See page 49



COMPATIBLE WITH ALL MARKET BASES



SIMPLE CONFIGURATION

MOD.	REF.	BUTTON	BASE & JOINTS	SCREWS	PACKAGING	QTY.
TYF4-3G	0129305011	YES	/	/	BAG	25
TYF10-3G	0129307011	YES	YES	/	BAG	25
TYF12-3G	0129317031	YES	YES	YES	BOX	20

COMPLETE FLUSH MECHANISM (WITH INLET VALVE)

MOD.	REF.	FLUSH MECHANISM	INLET VALVE	PACKAGING	QTY.
TYF14-3G	0129552231	TYF12-3G	FENYX SIDE INLET VALVE	BOLSA	15
TYF15-3G	0129552111	TYF12-3G	FENYX BOTTOM INLET VALVE	BOLSA	15

ECOTYFON 5G



UNE-EN 14055

Ecotyfon 5G. The even more improved version of the Tyfon 3G. Design compatible with all bases on the market. Double adjustable flush (9l - 3/4l) for water saving. Easy to install and even easier to use.

UNIVERSAL DUAL FLUSH MECHANISM



CHARACTERISTICS

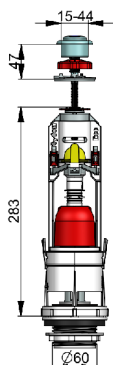
- Adjustable **dual flush mechanism** (9 L for full flush and 3-4.5 L for partial flush) for WC cisterns
- **Chrome-plated push button** included in all models
- **Easy assembly without cutting parts**
- **Easy connection system for attaching and detaching the base**
- **Easy adjustment** due to automatic locking system (green/yellow part to be removed after installation)
- Made of high quality polymers
- **Black EPDM rubber sealing gaskets**
- Sealing seals in **cellular rubber (sponge)**

ADAPTABILITY

- Compatibility with all market bases
- 100% national manufacture
- The set is supplied with all the parts for assembly.
- 3-year manufacturing guarantee, except for parts subject to wear and tear.
- Replacement and spare parts are guaranteed for a 10-year period



COMPATIBLE WITH ALL
MARKET BASES



REGULATION

According to Standard **UNE-EN 14055:2019**

SPARE PARTS

See page 49

SIMPLE CONFIGURATION

MOD.	REF.	BUTTON	BASE & JOINTS	SCREWS	PACKAGING	QTY.
TYF4-5G	0139305011	YES	/	/	BAG	25
TYF10-5G	0139327031	YES	YES	/	BAG	25
TYF12-5G	0139328011	YES	YES	YES	BAG	25
TYF12-5G	0139327011	YES	YES	YES	BOX	20



SET UP A FOMINAYA AND 'DON'T DISMANTLE YOUR CISTERN'.

Our main goal is to make things easy for you. And what's more, it's what we do best.

We have created a patented inter-base compatibility system so that you can replace one arrester with another without having to dismantle the tank.

Both the Tyfon 3G, Ecotyfon 5G and Dracko are compatible with all major bases on the market.

including all Fominaya bases and all Roca bases*. Imagine the security of going to a customer's home with the certainty that you will be able to replace the flush mechanism without having to dismantle the toilet cistern.

We continue working to provide you with the easiest and most efficient solutions. Installing a Fominaya flushing mechanism is synonymous of success.

*ROCA SANITARIO, S.A. Company not related to FOMINAYA, S.A.

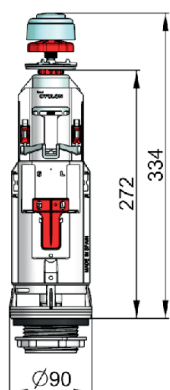
CYCLON



UNE-EN 14055

SIMPLE FLUSH MECHANISM

A classic Fominaya mechanism, prior to the Tyfon. Single flush with total regulation between 6 and 9 litres. Coupling with Fominaya bases and black Roca base*. Robust and efficient flush mechanism.



CHARACTERISTICS

- Total flush mechanism adjustable between 9 and 6 litres for WC cisterns equipped with top push button.
- Chrome-plated push button included in all models
- Easy installation without cutting parts
- Easy bayonet system for attaching and detaching the base
- Easy push button adjustment due to locknut system
- Made of high quality polymers
- Black EPDM rubber seals (sponge)

ADAPTABILITY

- Installation on Fominaya, black Roca* bases thanks to the coupling and new installation on the models supplied with a base
- Universal push button adaptable to all covers with holes from 16 to 45 mm diameter.
- 3-year manufacturer's warranty except for parts subject to wear and tear
- Replacement and spare parts are guaranteed for a 10-year period

REGULATION

According to Standard **UNE-EN 14055:2019**

SPARE TIMES

See page 49

SIMPLE CONFIGURATION

MOD.	REF.	BUTTON	COUPLING FOR ROCA* BASE & JOINTS	SCREWS	PACKAGING	QTY.
CLON4	0129202031	YES	YES	/	BAG	25
CLON5	0129201031	YES	/	YES	BAG	25
CLON10	0129206031	YES	YES	YES	BAG	25
CLON12	0129206011	YES	YES	YES	BOX	20

COMPLETE MECHANISM (WITH INLET VALVE)

MOD.	REF.	FLUSH MECHANISM	INLET VALVE	PACKAGING	QTY.
CLON3	0129201231	CLON12	SIDE INLET VALVE GL	BAG	20
CLON8	0129601131	CLON12	TYTAN	BAG	15
CLON14	0129751231	CLON12	FENYX SIDE INLET VALVE	BAG	15

*ROCA SANITARIO, S.A. Company not related to FOMINAYA, S.A.

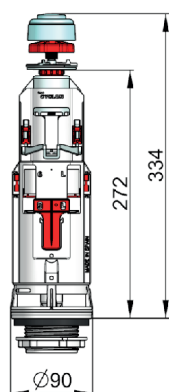
ECOCYCLON



UNE-EN 14055

The improved version of the Cyclon. The only flush mechanism with double adjustable discharge (3-4,5L and 6-9L). Equipped with double push button. Coupling with Fominaya bases and black Roca base*.

ADJUSTABLE DUAL FLUSHING MECHANISM



CHARACTERISTICS

- **Adjustable dual flush mechanism** (between 9 and 6 litres for full flush and 3-4.5 litres for partial flush) for WC cisterns equipped with double push-button top flush.
- **Chrome-plated push button** included on all models
- **Easy installation without cutting parts**
- Easy bayonet system for attaching and detaching the base
- Easy push button adjustment due to locknut system
- Made of **high quality polymers**
- Black EPDM rubber seals (sponge)

ADAPTABILITY

- Installation on **Fominaya bases, black Roca base*** thanks to the coupling and new installation on models supplied with base.
- **Universal push button adaptable** to all covers with holes from 16 to 45 mm diameter.
- 3-year manufacturer's warranty except for parts subject to wear and tear
- Replacement and spare parts are guaranteed for a 10-year period

REGULATION

According to Standard **UNE-EN 14055:2019**

SPARE PARTS

See page 49

SIMPLE CONFIGURATION

MOD.	REF.	BUTTON	COUPLING FOR ROCA*	BASE & JOINTS	SCREWS	PACKAGING	QTY.
ECY4	0139205011	YES	YES	/	/	BAG	25
ECY6	0139206011	YES	/	YES	/	BAG	25
ECY10	0139206031	YES	YES	YES	/	BAG	20
ECY12	0139207011	YES	YES	YES	YES	BOX	20

COMPLETE MECHANISM (WITH INLET VALVE)

MOD.	REF.	FLUSH MECHANISM	INLET VALVE	PACKAGING	QTY.
ECY1	0139210211	ECY12	SIDE INLET VALVE GL	BAG	20
ECY8	0139601111	ECY12	TYTAN	BAG	15
ECY13	0139250211	ECY12	FENYX SIDE INLET VALVE	BAG	15

*ROCA SANITARIO, S.A. Company not related to FOMINAYA, S.A..

DE1



UNE-EN 14055

OVERFLOW TUBE FLUSH MECHANISM

The DE1 is the classic flush handle that never goes out of fashion. Its universal design makes it compatible with most cisterns that still use top handles, it is the mechanism of a lifetime.

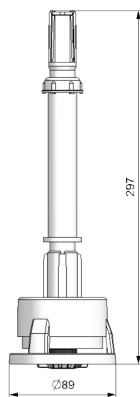


CHARACTERISTICS

- Length adjustable in height: from 297 to 370 mm.
- Easy assembly without cutting parts.
- Threaded installation system.
- Made of high quality polymers (PS/SBR).
- Black EPDM rubber sealing gasket.

ADAPTABILITY

- Installation on Fominaya and Negra de Roca* bases.
- Adaptable to straight and L-shaped handles.
- Universal handle set adaptable to all tops with holes from \varnothing 16 mm to \varnothing 45 mm depending on handle model.
- 3-year manufacturing guarantee except for parts subject to wear and tear.
- Replacement and spare parts guarantee of more than 10 years.



REGULATION

According to Standard **UNE-EN 14055:2019**

SPARE PARTS

See page 49

SIMPLE CONFIGURATION

MOD.	REF.	BASE & JOINTS	PACKAGING	QTY.
CE3	0146003100	/	BAG	25
DE1	0147004100	YES	BAG	20

DE2



UNE-EN 14055

OCEAN FLUSH VALVE MECHANISM

The DE2 combines the essence of the DE1 with innovations designed to save water. Perfect for those who are looking for modernity without giving up the reliability of the traditional handle, without neglecting economic and environmental saving

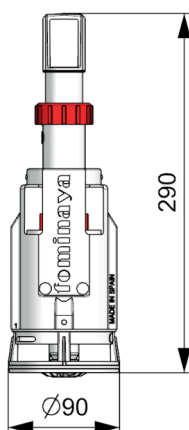


CHARACTERISTICS

- Flushing mechanism for top-operated cisterns, straight and L-shaped handles.
- Total flush adjustable between 6 and 9 litres.
- Easy assembly without cutting parts.
- Easy bayonet system for attaching and removing the base.
- Made of high quality polymers.
- Black rubber seals.

ADAPTABILITY

- Installation on Fominaya, black Roca* bases thanks to the coupling and new installation on the models supplied with base.
- Special DE2 model for Roca Victoria toilet.
- 3-year manufacturing guarantee except for parts subject to wear and tear.
- Replacement and spare parts are guaranteed for a 10-year period



SIMPLE CONFIGURATION

MOD.	REF.	BASE & JOINTS	PACKAGING	QTY.
CE4	0146104300	/	BAG	20
DE2	0147106300	YES	BAG	25

REGULATION

According to Standard **UNE-EN 14055:2019**

SPARE PARTS

See page 49

DE3



UNE-EN 14055

BAHYA FLUSH VALVE MECHANISM

The DE3 is the perfect choice for the 'Victoria' model toilets. It offers the same compatibility and ease of use as the classic DE2, but with a sustainable approach. Perfect for those looking for modernity and reliability.

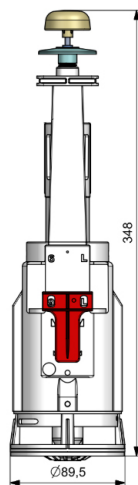


CHARACTERISTICS

- Flushing mechanism for top-operated cisterns top-operated, straight and L-shaped handles.
- Flush adjustable between 6 and 9 litres.
- Easy assembly without cutting parts.
- Easy bayonet system for attaching and removing the base.
- Made of top quality polymers.
- Black rubber seals.

ADPATABILITY

- Installation on Fominaya, black Roca* bases thanks to the coupling and new installation on the models supplied with base.
- Special models for Roca Victoria toilet.
- 3-year manufacturing guarantee except for parts subject to wear and tear.
- Replacement and spare parts are guaranteed for a 10-year period



REGULATION

According to Standard **UNE-EN 14055:2019**

SPARE PARTS

See page 49

SIMPLE CONFIGURATION

MOD.	REF.	BASE & JOINTS	PACKAGING	QTY.
CF1	0146105400	/	BAG	25
DE3	0147109400	YES	BAG	25

SPARE PARTS

FOR LOW TANK





W.C Connector MX DÚO
Eccentric ø90/110 mm.
Polyethylene and rubber
Ref. 0138543020
15 pcs/bag
Packaging: Bag



W.C Connector M9
Ø90 mm concentric
WC connector. Rubber
Ref. 0138043010
36 pcs/box
Bulk



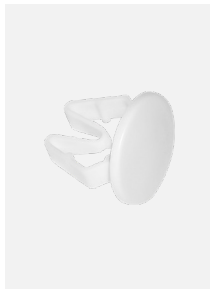
W.C Connector M11
Ø110 mm concentric
WC connector. Rubber
Ref. 0138043020
36 pcs/box
Bulk



W.C Connector MX 9
Ø90 mm concentric WC
connector Rubber.
Ref. 0138043030
36 pcs/box
Bulk



SIDE SHUTTER TRIM TPC
Chrome plated ABS cap
Ref. 0138015010
25 pcs/box
Bulk



SIDE SHUTTER TRIM TPP
Cap PPCO White Plastic
Ref. 0138015070
25 pcs/box
Bulk



**BOTTOM CISTERN SHUTTER
PLUG TP1**
POM nut + gasket
Ref. 0138015030
25 pcs/box
Bulk



W.C Connector MX 11
Ø110 mm concentric
WC connector
Rubber.
Ref. 0138043040
36 pcs/box
Bulk



**UNIVERSAL WC-
CISTERN JOINT CM 1 L**
ø90/110 mm. Rubber.
Ref. 0138048070
36 pcs/box
Bulk



**UNIVERSAL WC-
CISTERN JOINT CM 2**
Standard, Rubber.
Ref. 0138048090
36 pcs/box
Bulk



**UNIVERSAL MEC-
CISTERN JOINT JD2JD1**
ø74,5x59,5 mm.
Ref. 0138050010
50 pcs/box
Bulk



**UNIVERSAL MEC-
CISTERN JOINT JD2**
ø81x55 mm.
Ref. 0138049010
50 pcs/box
Bulk



**UNIVERSAL MEC-
CISTERN JOINT JD3**
ø82x56 mm.
Ref. 0138049020
50 pcs/box
Bulk



**UNIVERSAL WC-
CISTERN JOINT . J11**
ø105x85 mm. e12 mm.
Ref. 0138048040
50 pcs/box
Bulk



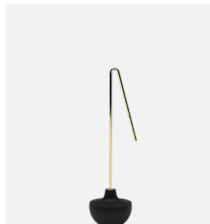
**UNIVERSAL WC-
CISTERN JOINT J13**
ø100x59 mm.
Ref. 0138048010
50 pcs/box
Bulk



**UNIVERSAL WC-
CISTERN JOINT J15**
ø110x58mm.
Ref. 0138048030
50 pcs/box
Bulk



**CHROMED
WASHBASIN/BIDT
OVERFLOW TRIM EM1**
ABS - ø23 mm.
Ref. 0138015040
50 pcs/box
Bulk



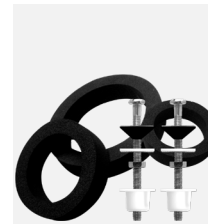
GOMA PERA CAUCHO
ø63 mm. Rod included.
Ref. 0138003070
25 pcs/box
Packaging: Box



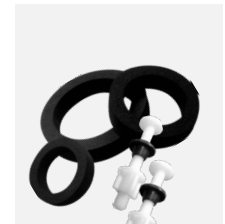
CISTERN JOINTS KJ1
Thickness 20 mm.
Ref. 0138548010
50 uds/caja
Bulk



CISTERN JOINTS KJ2
Thickness 15 mm.
Ref. 0138548020
50 uds/caja
Bulk



CISTERN JOINTS KJT1
Thickness 15 mm. + Screws
INOX.
Ref. 0138576010
10 uds/caja
Packaging : bag



CISTERN JOINTS KJT2
Thickness 20 mm. + Screws
POM
Ref. 0138576020
10 uds/caja
Packaging : Bag



BOTTOM INLET VALVE GV1

Piston rod/plunger seal. Connection 3/8" brass.
Compatibility:
Nerja-Capri-Lorentina-Loira-Gaeta-Concrete-
Arlan-za-Confor-Aquaria-Granada

Ref. 0144500530
25 pcs/box
Packaging bag



PLASTIC FLOATER BY7

Expanded polystyrene. Connection 3/8". Compatibility:
Float rod/float float taps Screwless adjustment.

Ref. 0144701740
25pcs/box
Bulk



PLASTIC FLOATER BY14

Expanded polystyrene.
ø14 mm. with threaded shank + pin.
Compatibility:
Float taps rod/float buoy.

Ref. 0144700740
25 pcs/box
Bulk



SIDE INLET VALVE GL4

Piston rod/plunger seal. Connection 3/8" brass. Compatibility:
Lotus-Lucerne Series 2000-Alcora-Proa-Espacio

Ref. 0144503530
10 pcs/box
Packaging bag



SIDE PUSH BOTTON PC1

Chrome-plated. Metal. Length 190 mm. Compatibility:
Zenta España-Leonardo and Lorentina.

Ref. 0142017130
10 pcs/box
Packaging bag



PSIDE PUSH BOTTON PC2

Chrome-plated. Metal. Length 280 mm. Compatibility:
Special Roca

Ref. 0142015130
10 pcs/box
Packaging bag



SIDE PUSH BOTTON PM1

Chrome-plated. Metallic. Length 170 mm. Compatibility:
Algarbe-Loira-Grecia-Classica-Esfinge

Ref. 0142018130
10 pcs/box
Packaging bolsa



SIDE PUSH BOTTON PM2

Chrome-plated. Metallic. Length 230 mm. Compatibility:
Concrete

Ref. 0142019130
10 pcs/box
Packaging bolsa

ADAPTOR FOMINAYA AD1

ref. 0138529010
Bulk



Series AQUA, LLAURO Y TYFON+
Roca* Black Base + Fominaya`s
Bases

25 pcs/Box

ADAPTOR FOMINAYA AD2

ref. 0138529020
Bulk



Series CYCLON, ECOCYCLON,
BAHYA Y OCEAN
Roca* Black Base + Fominaya`s Bases

25 pcs/Box

BASE + NUT BT1

ref. 0138508010
Bulk



Series AQUA, LLAURO, TYFON+ y
TYFON 3G
Product for new installation

25 pcs/Box

BASE + NUT BT2

ref. 0138508020
Bulk



Series CYCLON, ECOCYCLON, BAHYA
Y OCEAN
Product for new installation

25 pcs/Box

Fixing a toilet is not something that can be postponed, nor can it be foreseen. It is something that simply happens and needs to be repaired as soon as possible.

At Fominaya, we know the vital importance of this, which is why we are obsessed with offering you the best service as quickly as possible.

We have a 24/48h policy to cover your back whenever you need it.

If there is one thing we can assure you, it is that you will give service to your customer.

LEADERS IN REPLACEMENT



FLUSH VALVE SEAL



RF1

d18ø - D68,5ø mm. Thickness 3 mm. Virgin rubber

Compatibility

**DE1, CE3 OLD PULL KNOB
ROCA* MODEL**

Ref. 0138003030
100 pcs/box
Bulk



RF2

d18ø - D68,5ø mm. Thickness 3 mm. EPDM

Compatibility

**DE1, CE3 OLD PULL KNOB
ROCA* MODEL**

Ref. 0138003040
100 pcs/box
Bulk



RB1

d18ø - D57ø mm. Thickness 3,5 mm. EPDM

Compatibility

LLAURO, AQÜA, DC52 Y D5M

Ref. 0138003010
100 pcs/box
Bulk



RB2

d23ø - D73ø mm. Thickness 3 mm. Virgin rubber

Compatibility

DE2, CE4 OLD ROCA* MODEL

Ref. 0138003020
100 pcs/box
Bulk



OBTURADORA RB3

d32ø - D68ø mm. Thickness 3,1 mm. EPDM

Compatibility

NEW VICTORIA ROCA* MODEL

Ref. 0138003050
100 pcs/Box
Bulk



OBTURADORA RB4

d17ø - D65ø mm. Thickness 2 mm. EPDM

Compatibility

**CYCLON, ECOCYCLON, OCEAN, BAHYA
DUAL FLUSH ROCA***

Ref. 0138003080
100 pcs/box
Bulk



OBTURADORA RB5

d17ø - D62ø mm. Thickness 2 mm. EPDM

Compatibility

**TYFON +, TYFON 3G, ECOTYFON 5G
DRACKO**

Ref. 0138003090
100 pcs/box
Bulk

CHARACTERISTICS

Sealing rubber for drainage mechanisms 100% watertight, prevents water from escaping.

Resistant to hard water.

Resistant to chemical agents.

Manufactured 100% in Spain.

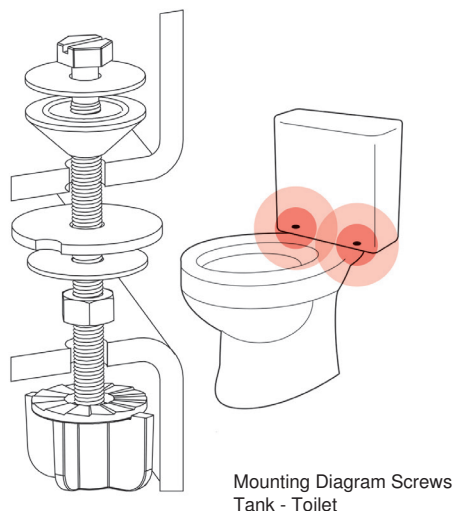
ADAPTABILITY

Compatible with Fominaya and Roca* models as described.

3-year manufacturing warranty except for parts subject to wear and tear.

Replacement and spare parts are guaranteed for a 10-year period

STAINLESS STEEL SCREWS. CISTERN-TOILET



CHARACTERISTICS

Screws for fixing the cistern to the toilet. Screws, washers and intermediate nut in stainless steel. Special anti-corrosion.

Includes intermediate nut to prevent water spillage to the outside of the cistern in the event of disassembly.

ADAPTABILITY

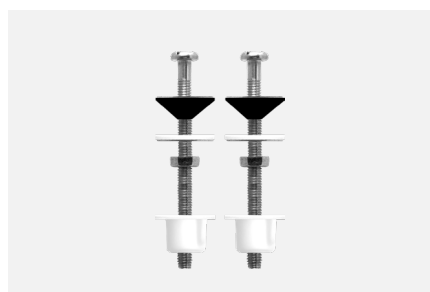
TC1 and TC3: Universal compatibility.

TC2: Compatible with Alcora and Domo models.

100% spanish manufacture.

3-year manufacturing guarantee except for parts subject to wear and tear.

Replacement and spare parts are guaranteed for a 10-year period



SCREWS FOR CISTERN-TOILET FASTENING TC1

STAINLESS - RM 6x80 mm. . Universal.

Ref. 0140564030

25 pcs/box
Bag packaging

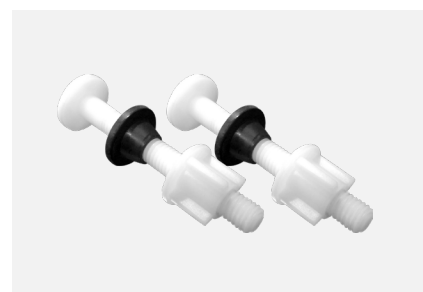


SCREWS FOR CISTERN-TOILET FASTENING TC2

STAINLESS - RM 6x120 mm. Alcora-Domo.

Ref. 0140564040

25 pcs/box
Bag packaging



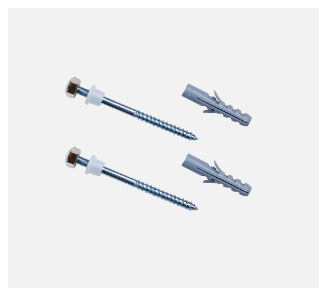
TSCREWS FOR CISTERN-TOILET FASTENING TC3

POM - RM 9x80 mm. Universal.

Ref. 0140564070

25 pcs/box
Bag packaging

STAINLESS STEEL SCREWS. TOILET/BIDET - FLOOR



STAINLESS STEEL SCREWS. TOILET/ BIDET T11

Toilet/bidet - floor. Vertical.
Galvanised iron - Brass head RM
5x75 mm.. Universal
Ref. 0140564050
25 pcs/box
Bag packaging



STAINLESS STEEL SCREWS. TOILET/ BIDET T12

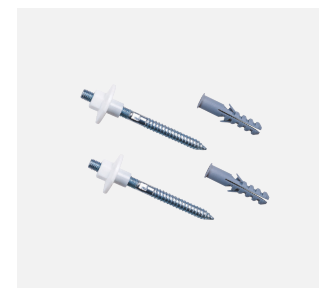
Toilet/bidet-floor. Side. Bichromated
iron - Stainless steel head M6 mm.
Universal
Ref. 0140564060
25 pcs/box
Bag packaging



STAINLESS STEEL SCREWS. TOILET/BIDETT15

Toilet/bidet - floor. Lateral.
Stainless steel. Universal.
Ref. 0140564080
25 pcs/box
Bag packaging

STAINLESS STEEL SCREWS. WASHBASIN FASTENING



WASHBASIN FASTENING T11

Washbasin connection. Galvanised
iron. Nylon head RM 10x110 mm..
Ref. 0138564010
25 pcs/box
Bag packaging

FOMINAYA PUSH BUTTON



PUSH BUTTON GUIDE.

SERIES 1 and 3

Fitted with trim.

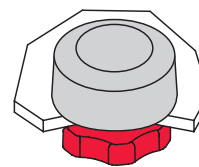
For cover holes between $\varnothing 15 - \varnothing 25$:
Use trim and red nut downwards.

For wider holes between $\varnothing 37 - \varnothing 45$:
NO trim and red nut in bowl upwards.

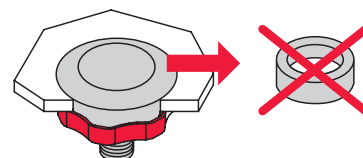
SERIES 2

Fitted with adapter ring.

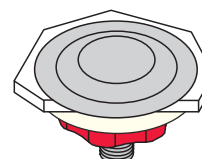
Special models for toilets with cover hole larger than $\varnothing 45$ mm. Fit chrome-plated trim on top and ABS trim underneath. Red nut at the top of the bowl.



$\varnothing 15 - \varnothing 25$ mm



$\varnothing 37 - \varnothing 45$ mm



$\varnothing 45 - \varnothing 60$ mm

INSTALLATION ADVICE

Tighten the red nut just enough to hold the push button firmly in the cover, but do not over tighten it. It is not necessary to use any kind of spanner.

SIMPLE PUSH BUTTON

Compatible with Tyfon 3G, Tyfon +, Cyclon & simple Aqüa models.

series 1 (ø15 - ø45)



PTY1

ref. 0142303110
in bag
25 pcs/box

DUAL PUSH BUTTON

Compatible with Ecotyfon 5G, Ecocyclon & Dual Aqüa models.



P1

ref. 0142203110
in bag
25 pcs/box

DRACKO PUSH BUTTON

Compatible only with Dracko model.



PDK1

ref. 0142204110
in bag
25 pcs/box

series 2 (> ø45 mm)



PTY2

ref. 0142304110
in bag
10 pcs/box



P2

ref. 0142205110
in bag
10 pcs/box



PDK2

ref. 0142206110
in bag
10 pcs/box

series 3 (ø15 - ø45)



PTY3

ref. 0142308410
in bag
6 pcs/box



P3

ref. 0142207110
in bag
6 pcs/box

NEW MATTE BLACK PUSH BUTTON

Bringing your bathroom up to date is possible without having to change to a concealed cistern.

Fominaya's black pushbuttons have a double layer of matt automotive paint.

High resistance to cleaning products. Do not use scouring pads or abrasives.

FOMINAYA PULL KNOB

Vertical pull knob model 1 TV1A Ref.0142001120



MODEL 1

Compatible with Domo-Dual-Lucerna-Itálica-Granada-Venecia-Acuaria-Novo Espacio-Cuadraco models



TV1A

ref. 0142001120
in bag

Brass knob, chromed ABS base and stainless steel rod 83 mm.

25 pcs/box

TV1C

ref. 0142001110
in bag

Brass knob, chromed ABS base and stainless steel rod 83 mm.

25 pcs/box

MODEL 2

Compatible with Venus-Apolo-Confo-Nerja-Alcora-Arlanza models



TV2A

ref. 0142002120
in bag

Brass knob, chromed ABS base and stainless steel rod 68 mm.

25 pcs/box

TV2C

ref. 0142002110
in bag

Brass knob, chromed ABS base and stainless steel rod 68 mm.

25 pcs/box

MODEL 4

Compatible with Segesta-Roca-Lisboa-Valentine models



TV4A

ref. 0142004120
in bag

Brass knob, chromed ABS base and stainless steel rod 114x56 mm.

25 pcs/box

TV4C

ref. 0142004110
in bag

Brass knob, chromed ABS base and stainless steel rod 114x56 mm.

25 pcs/box

MODEL 5

Universal Compatible with Special Roca*



TV5A

ref. 0142005120
in bag

Brass knob, chromed ABS base and stainless steel rod 114 mm.

25 pcs/box

TV5C

ref. 0142005110
in bag

Brass knob, chromed ABS base and stainless steel rod 114 mm.

25 pcs/box

MODEL 6

Universal



TV6A

ref. 0142006120
in bag

Brass knob, chromed ABS base and stainless steel rod 88x57 mm..

25 pcs/box

TV6C

ref. 0142006110
in bag

Brass knob, chromed ABS base and stainless steel rod 88x57 mm.

25 pcs/box

MODEL 9

Universal for cover holes diameter 45 mm



TV9A

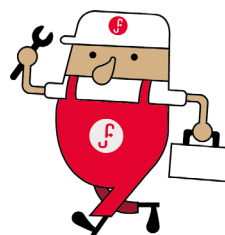
ref. 0142009310
in bag

Brass knob, chromed ABS base and stainless steel rod 95x50 mm.

25 pcs/box

FOMINAYA TRAINING

COMPLETELY FREE OF CHARGE



LAST LESSON



APPLY FOR YOUR TRAINING.

Our commitment to Vocational Training throughout Spain. These training days are part of our ongoing commitment to the development of talent in the sector throughout Spain.

At Fominaya we are convinced that education and collaboration with training centres are key to preparing future professionals. **Interested in an open day? If your centre is interested, we would be delighted to collaborate.**

Our team of experts is always ready to travel to share knowledge and connect with the professionals of the future.

HIGH CISTERN



BL263 Black Ref.0153002610

Black Cistern Downpipes SET
Ref.0154067020

NEW

High level cistern and downpipe in black.

*Available on request only

FILL VALVES

GC1

ref. 0151600630
Bulk

GCB 1

ref. 0151650630
in bag



FILL VALVES WITH HEAD CUP
Side inlet valve (brass) + nut (plastic)
ø3/8' Brass. Length 30 mm.

25 pcs/box



FILL VALVES WITH HEAD CUP
Side tap (brass) + nut + float ø3/8'
Brass. Length 30 mm.

25 pcs/box

GP 2

ref. 0151501530
Bulk

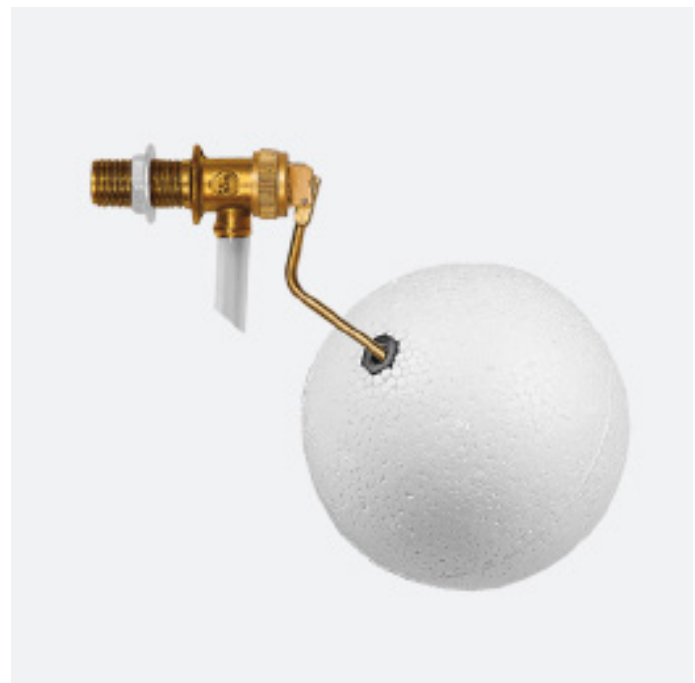
GPB 2

ref. 0151551530
in bag



Noiseless Valves
Side inlet valve (brass) + nut (plastic)
ø3/8' Brass. Length 32 mm.

25 units/box



Noiseless Valves
Side inlet valve (brass) + nut
(plastic) ø3/8' Brass. Length 32
mm.

25 units/box

FLUSH VALVE

FLUSH VALVE MECHANISM FOR HIGH LEVEL CISTERN



MOD.	REF.	Ø OVERFLOW TUBE	OVERFLOW TUBE	PACKAGING	BASE	QTY.
DESCARGADOR DC 251	0156003510	12 mm.	BRASS	BAG	PS/SBR	25
DESCARGADOR DC 252	0156003610	12 mm.	BRASS	BAG	ZAMAK 5	25
DESCARGADOR DC 254	0156003720	12 mm.	PS/SBR	BAG	PS/SBR	25
DESCARGADOR DC 261	0156004810	5 mm.	BRASS	BAG	PS/SBR	25
DESCARGADOR DC 262	0156004910	5 mm.	BRASS	BAG	ZAMAK 5	25



MOD.	REF.	Ø OVERFLOW	Ø FLUSH VALVE	PACKAGING	BASE	OVERFLOW TUBE	QTY.
CAMPANA D 026	0155004410	5 mm.	57 mm.	BAG	NO	BRASS	25
CAMPANA D 25	0155003320	12 mm.	65 mm.	BAG	NO	PS/SBR	25
CAMPANA D 025	0155003310	12 mm.	65 mm.	BAG	NO	BRASS	25

FITTINGS PACK

FITTINGS PACK FOR HIGH LEVEL CISTERN.

BL 261

Fittings pack for high level cistern
Flush mechanism DC261 + Inlet
valve GC1.



ref. 0153004609
in bag

Compatibility: Universal. All high or
suspended tank cisterns..

20 pcs/box

BL 262

Fittings pack for high level cistern.
Flush mechanism DC262 + Inlet
valve GC1.



ref. 0153004610
in bag

Compatibility: Universal. All high or
suspended tank cisterns.

20 pcs/box

BL 263

Fittings pack for high level cistern
Flush mechanism DC262 + Inlet
valve GL1.



ref. 0153014110
in bag

Compatibility: Universal. All high or
suspended tank cisterns.

20 pcs/box

BL 252

Fittings pack for high level cistern
Flush mechanism DC252 + Inlet
valve GC1.



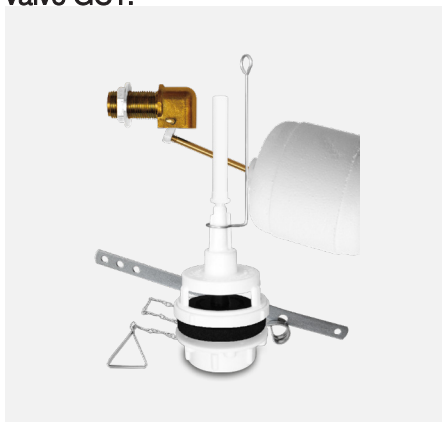
ref. 0153004607
in bag

Compatibility: Universal. All high or
suspended tank cisterns.

20 pcs/box

BL 254

Fittings pack for high level cistern
Flush mechanism DC254 + Inlet
valve GC1.



ref. 0153004608
in bag

Compatibility: Universal. All high or
suspended tank cisterns.

20 pcs/box

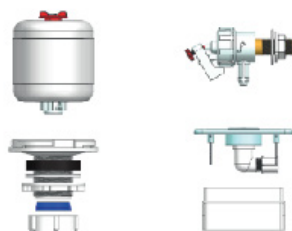
MECHANISM OPERATED BY EMBEDDED PUSH BUTTON

**SPECIAL FOR SCHOOLS &
PUBLIC BUILDINGS**

CISTERN CQ 3



Flush valve mechanism + cistern CQ3



DC52 PARTS

CHARACTERISTICS

Complete hydropneumatic mechanism, for installation in 15-litre concealed high cistern, operated by air pushbutton. NOT ELECTRIC. GL1 tap with 3/8" brass inlet included. Gaskets and accessories for installation included. Downpipe connection diameter 32 mm. Connection to downpipe by means of conical joint supplied. Chrome-plated ABS push button, with soft actuation. Supplied with fixing brackets and plugs. PVC downpipe not supplied, use Ø 32 mm pipe.

ADAPTABILITY

Especially for public facilities or premises. Install before tiling the bathroom. Hidden installation, avoiding manipulation and vandalism. Manufactured 100% in Spain. Includes 15 L cistern (CQ3). (Model sold without cistern: DC52 - ref. 0153004101) 3-year manufacturing guarantee except for parts subject to wear and tear. Replacement and spare parts guarantee for more than 10 years.

CONFIGURATION

MOD.	REF.	PACKAGING	CISTERN	QTY.
CISTERNA CQ 3	0153002101	BOX	INCLUDED	1
CONJUNTO DC 52	0153004101	BAG	NO	10

SPARE PARTS

MOD.	REF.	PACKAGING	QTY.
PULSADOR PE 5	0158001100	BOX	10
OBTURADORA RB1	0138003010	BULK	100



**15L CISTERN CQ2
FULL EQUIPMENT**
High density polypropylene
Fitted with BL254
Ref. 0153002608
8 pcs/box
Packaging bag



Rubber Stop RT5
Overflow ø5 mm.
Ref. 0154003030
100 pcs/box
Bulk



Rubber Stop RT7
Overflow ø7 mm.
Ref. 0154003010
100 pcs/box
Bulk



Rubber Stop RT12
Overflow ø12 mm.
Ref. 0154003020
100 pcs/box
Bulk



CISTERN C2**
Capacity 15 litres, made of PP.
Ref. 0153002011
8 pcs/bag
Packaging bag



**TWO-PART WC FLUSH
PIPEBI 1****
Height: 175 mm. ø32 mm.
White PVC
Ref. 0154067010
10 pcs/box
Packaging Box



FLOATER BY1 3/8"
ø85. For 3/8" inlet valve
Ref. 0151700740
25 pcs/box
Bulk



FLOATER BY2 1/2"
ø115. For 1/2" inlet valve
Ref. 0151701740
25 pcs/box
Bulk



TROUND HEAD SCREW T02
Poliamida PA6
Toilet seat fastening
Ref. 0153564010
50 pcs/box
Bulk



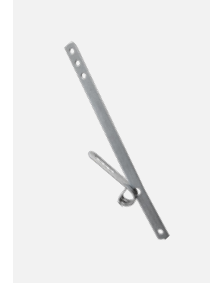
SCREWS TP 1
Galvanised iron
Ref. 0154564010
100 pcs/box
Bulk



SCREWS KIT TP 2
Screws + plugs + spacers
Ref. 0154564030
50 pcs/box
Packaging bag



BRASS CON. R1
ø32
Ref. 0154006010
25 pcs/box
Bulk



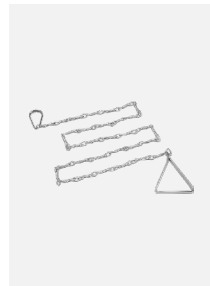
WC Lever PA 27
Length 275 mm.
Ref. 0154007020
25 pcs/box
Bulk



WC TOILET SEAR TA 1
Polypropylene (including
screws)
Ref. 0153600010
12 pcs/box
Packaging bag



WC TOILET SEAT TA 2
ABS (including screws)
Ref. 0153600020
10 pcs/box
Packaging bag



CADENILLA CA 1
Galvanised iron
Long. 80 cm.
Ref. 0154005010
25 pcs/box
Packaging bag



RUBBER WC CON. EG 1
Compatible: Lucerna
ø25 - 30/53 mm.
Ref. 0154043020
25 pcs/box
Bulk



RUBBER WC CON. EG 2
Compatible: Victoria
ø25/63 mm.
Ref. 0154043030
25 pcs/box
Bulk



RUBBER WC CON. EG 3
Compatible: Peninsular
ø28/53 mm.
Ref. 0154043010
25 pcs/box
Bulk

ACCESSORIES, SEALS & O-RINGS



TORICAL SEALS (K2 BOX)

fominaya®

IMAGE	MOD.	REF.	DESCRIPCIÓN	BAG PACKAGING.	QTY.	€/PC
	JT7	0114009071	Tórica 2,90x1,78		100	0,18
	JT8	0114009081	Tórica 3,68x1,78		100	0,18
	JT9	0114009091	Tórica 4,47x1,78		100	0,18
	JT10	0114009101	Tórica 5,28x1,78		100	0,18
	JT11	0114009111	Tórica 6,07x1,78		100	0,18
	JT12	0114009121	Tórica 7,65x1,78		100	0,19
	JT13	0114009131	Tórica 9,25x1,78		100	0,19
	JT14	0114009141	Tórica 9,19x2,62		100	0,21
	JT15	0114009151	Tórica 10,77x2,62		100	0,21
	JT16	0114009161	Tórica 12,37x2,62		100	0,21
	JT17	0114009171	Tórica 13,95x2,62		100	0,22
	JT18	0114009181	Tórica 15,54x2,62		100	0,23
	JT19	0114009191	Tórica 17,12x2,62		100	0,23
	JT20	0114009201	Tórica 18,72x2,62		100	0,23
	JT21	0114009211	Tórica 18,64x3,53		100	0,28
	JT22	0114009221	Tórica 20/22x3,53		100	0,28
	JT23	0114009231	Tórica 21,82x3,53		100	0,30
	JT24	0114009241	Tórica 23,39x3,53		100	0,31
	JT25	0114009251	Tórica 24,99x3,53		100	0,32
	JT26	0114009261	Tórica 26,57x3,53		100	0,34
	JT27	0114009271	Tórica 28,17x3,53		100	0,34
	JT28	0114009281	Tórica 29,74x3,53		100	0,35
	JT29	0114009291	Tórica 31,34x3,53		100	0,36
	JT30	0114009301	Tórica 32,92x3,53		100	0,38
	JT31	0114009311	Tórica 34,52x3,53		100	0,4
	JT32	0114009321	Tórica 36,09x3,53		100	0,4
	JT33	0114009331	Tórica 37,69x3,53		100	0,43
	JT34	0114009341	Tórica 37,47x5,33		100	0,7
	JT35	0114009351	Tórica 40,64x5,33		100	0,7
	JT36	0114009361	Tórica 43,81x5,33		100	0,71







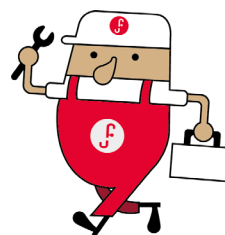
IMAGEN	MOD.	REF.	DESCRIPCIÓN	PACK	UDS.	€/PC.
	A1	0114005013	Arandela Plana 3/8" (d16ø - D30ø)	Bolsa	50	0,25
	A2	0114005023	Arandela Plana 1/2" (d20ø - D45ø)	Bolsa	50	0,26
	A3	0114005033	Arandela Plana 3/4" (d25ø - D62ø)	Bolsa	50	0,34
	A4	0114005043	Arandela Plana 1" (d30ø - D70ø)	Bolsa	50	0,35
	A5	0114005053	Arandela Plana 1 1/4" (d36ø - D67ø)	Bolsa	50	0,34
	A6	0114005063	Arandela Plana 1 1/2" (d40ø - D77ø)	Bolsa	50	0,40
	A7	0114005073	Arandela Fregadero (d46ø - D70ø)	Bolsa	50	0,34
	JFP1	0114012011	Junta plana con Filtro INOX. 3/8" (d10ø - D15ø x 1,8)	Bolsa	25	0,71
	JFP2	0114012021	Junta plana con Filtro INOX. 1/2" (d14,4ø - D18ø x 2,5)	Bolsa	25	0,80
	JFP3	0114012031	Junta plana con Filtro INOX. 3/4" (d17,5ø - D24ø x 3,2)	Bolsa	25	0,82
	K1	0114010021	Caja Tóricas 1.470 unidades varios tamaños	Caja	1	74,79
	K2	0114010031	Caja Tóricas 382 unidades varios tamaños Ver despiece en página anterior	Caja	1	46,23
	K3	0114010011	Caja Especial para Fontanería 715 unidades varios tamaños	Caja	1	76,60
	K4	0114010041	Caja Arandelas Planas de Caucho 925 unidades varios tamaños	Caja	1	85,88
	K5	0114010054	Caja Arandelas Planas de CSA-28 925 Unidades varios tamaños	Caja	1	85,88

IMAGEN	MOD.	REF.	DESCRIPCIÓN	PACK	UDS.	€/PC.
 <p>serie J caucho NBR</p>	J1	0114006011	Junta Plana 1/4" (d8ø - D12ø)	Bolsa	100	0,21
	J2	0114006021	Junta Plana 3/8" (d8ø - D14,5ø)	Bolsa	100	0,21
	J3	0114006031	Junta Plana 3/8" (d10ø - D14ø)	Bolsa	100	0,21
	J4	0114006041	Junta Plana 3/8" (d10ø - D15ø)	Bolsa	100	0,21
	J5	0114006051	Junta Plana 1/2" (d10ø - D19ø)	Bolsa	100	0,21
	J6	0114006061	Junta Plana 1/2" (d11ø - D18ø)	Bolsa	100	0,22
	J7	0114006071	Junta Plana 1/2" (d11ø - D19ø)	Bolsa	100	0,22
	J8	0114006081	Junta Plana 1/2" (d12ø - D18ø)	Bolsa	100	0,22
	J9	0114006091	Junta Plana 1/2" Racor Cobre (d13ø - D18ø)	Bolsa	100	0,21
	J10	0114006101	Junta Plana 3/4" (d13ø - D24ø)	Bolsa	100	0,23
	J11	0114006111	Junta Plana 1/2" (d14ø - D18ø)	Bolsa	100	0,21
	J12	0114006121	Junta Plana 5/8" (d15ø - D21ø)	Bolsa	100	0,23
	J13	0114006131	Junta Plana 3/4" Racor Gas (d16ø - D23ø)	Bolsa	100	0,23
	J 14	0114006141	Junta Plana 3/4" (d16ø - D24ø)	Bolsa	100	0,25
	J15	0114006151	Junta Plana 3/4" R. Gas Cobre (d18ø - D23ø)	Bolsa	100	0,23
	J16	0114006161	Junta Plana 7/8" R. Gas (d22ø - D27ø)	Bolsa	100	0,26
	J17	0114006171	Junta Plana 1" R. Gas Cobre (d23ø - D29ø)	Bolsa	100	0,26
	J18	0114006181	Junta Plana 1" R. Gas (d23ø - D30ø)	Bolsa	100	0,23
	J20	0114006211	Junta Plana 1 1/4" (d32ø - D38ø)	Bolsa	100	0,38
	J21	0114006221	Junta Plana 1 1/2" (d36ø - D44ø)	Bolsa	100	0,48
	J22	0114006241	Junta Plana 2" (d47ø - D54ø)	Bolsa	100	0,65
	J23	0114006251	Junta Plana 1" (d20ø - D30ø)	Bolsa	100	0,27
	 <p>serie JK CSA 28</p>	JK1	0114006014	Junta Plana 1/4" (d8ø - D12ø)	Bolsa	100
JK2		0114006024	Junta Plana 3/8" (d8ø - D14,5ø)	Bolsa	100	0,21
JK3		0114006034	Junta Plana 3/8" (d10ø - D14ø)	Bolsa	100	0,21
JK4		0114006044	Junta Plana 3/8" (d10ø - D15ø)	Bolsa	100	0,21
JK5		0114006054	Junta Plana 1/2" (d10ø - D19ø)	Bolsa	100	0,21
JK6		0114006064	Junta Plana 1/2" (d11ø - D18ø)	Bolsa	100	0,22
JK7		0114006074	Junta Plana 1/2" (d11ø - D19ø)	Bolsa	100	0,22
JK8		0114006084	Junta Plana 1/2" (d12ø - D19ø)	Bolsa	100	0,22
JK9		0114006094	Junta Plana 1/2" Racor Cobre (d13ø - D18ø)	Bolsa	100	0,21
JK10		0114006104	Junta Plana 3/4" (d13ø - D23ø)	Bolsa	100	0,23
JK11		0114006114	Junta Plana 1/2" (d14ø - D18ø)	Bolsa	100	0,21
JK12		0114006124	Junta Plana 5/8" (d15ø - D20ø)	Bolsa	100	0,23
JK13		0114006134	Junta Plana 3/4" Racor Gas(d16ø - D23ø)	Bolsa	100	0,23
JK14		0114006144	Junta Plana 3/4" (d16ø - D24ø)	Bolsa	100	0,25
JK15		0114006154	Junta Plana 3/4" R. Gas Cobre (d18ø - D23ø)	Bolsa	100	0,23
JK16		0114006164	Junta Plana 7/8" R. Gas (d22ø - D27ø)	Bolsa	100	0,26
JK17		0114006174	Junta Plana 1" R. Gas Cobre (d23ø - D30ø)	Bolsa	100	0,26
JK18		0114006184	Junta Plana 1" R. Gas (d24ø - D30ø)	Bolsa	100	0,23
JK19		0114006264	Junta Plana 1" (d24ø - D30ø)	Bolsa	100	0,26
JK20		0114006214	Junta Plana 1 1/4" (d32ø - D38ø)	Bolsa	100	0,38
JK21		0114006224	Junta Plana 1 1/2" (d36ø - D44ø)	Bolsa	100	0,48
JK22		0114006244	Junta Plana 2" (d47ø - D54ø)	Bolsa	100	0,65
JK23		0114006254	Junta Plana 1" (d20ø - D30ø)	Bolsa	100	0,27

FOMINAYA FACILITIES



100% GUARANTEED
CORRECT INSTALLATION

PRODUCT INSTALLATION VIDEOS



NOVEDAD 2024 - Pulsadores Negro Mate



Fominaya
2592 suscriptores

Suscribirse

939

Compartir

Descargar

Guardar

QR INCLUDED IN THE PACKAGING

escanea con tu móvil para
acceder al video de instalación



fominaya®
TYFON 3G
MECANISMO UNIVERSAL INTERRUMPIBLE

FOLLOW US ON SOCIAL MEDIA

TikTok



Product Demos: See our latest releases in action and discover their unique features.

Installation Guides: Step-by-step tutorials for efficient and hassle-free installation.

Instagram



Maintenance Tips: Practical recommendations to ensure the durability and optimal performance of your Fominaya products.

GENERAL CONDITIONS

1. THE PRICES indicated in this CATALOGUE OF PRICES are in euros (€) per unit of product. The prices reflected in our price list are the recommended retail prices and do not include VAT. Fominaya, S.A. reserves the right to change its pricing policy at any time with the corresponding notice. Prices are valid except for typographical errors.

2. TAXES: The relevant taxes in accordance with current law will be applied directly to the invoice on the prices indicated in the price list.

3. CONDITIONS OF RECEIPT AND CANCELLATION OF ORDERS: Fominaya, S.A. reserves the right to accept or decline orders received. Orders must be submitted in writing, this implies acceptance by the customer of all the general conditions of sale. Cancellations must also be sent in writing, and will not be accepted once the material has been dispatched.

4. CARRIAGE AND MINIMUM ORDER TO SERVE: Carriage paid to the buyer's address, except for Export customers, provided that these are greater than 300 euros for the Peninsula and 1,000 euros for the Canary Islands, and the quantities per product must conform to the original packaging indicated in this Catalogue/Price List.

5. DELIVERY DEADLINES: The delivery times established are considered as a guideline, without accepting in any way, claims for any possible delay of the shipment for justified reasons or beyond the control of Fominaya, SA.

6. PAYMENT TERMS AND CONDITIONS: According to the current payment law. Payment will be made under the conditions agreed with the buyer and within the deadlines stipulated with the same.

7. WARRANTY: The WARRANTY PERIOD of our products is 3 years from the date of purchase by the customer. The guarantee of our articles is limited to the replacement of the product that is recognised as defective by our Quality Department. Damage to third parties is covered by a civil liability policy, provided that the product has been used correctly during installation and subsequent use.

8. CLAIMS AND RETURNS: Due to the nature of the product, any product claim must be made in writing within the first 15 days after delivery of the goods by Fominaya, S.A. to its direct customers and from these to third parties. Any use or use of our products for purposes other than those for which they were designed and manufactured will exempt Fominaya, S.A. from any liability or warranty. Material returns must be made through our commercial agents under the authorization and conditions agreed. We do not accept returns of discontinued products regardless of their condition.

8. MODIFICATIONS: Fominaya, S.A. reserves the right to introduce modifications of design, measures, units or of any other nature of all our products without prior notice, and without the obligation of having to continuously modify the catalogue/price list in order to introduce such modifications.

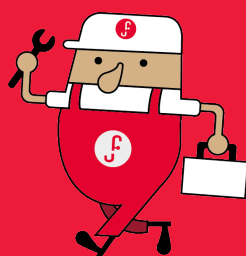
9. This CATALOGUE/PRICE LIST cancels all previous editions in whatever format.

10. JURISDICTION: To resolve any questions that may arise from the application of these general conditions, both Fominaya, S.A. and the buyer agree to submit to the Courts and Tribunals of Llíria (Valencia - Spain), renouncing their own jurisdiction.

2026

fominaya®

SINCE 1939



T. +34 961 600 651

F. +34 961 601 351

info@fominaya.com

www.fominaya.com

Ctra. del Pla, s/n · Apdo. Correos, 62

46117 Bétera · Valencia, Spain

Nº 39,59831 · Wº 0,45501